

# Facade claddings











# A FACADE THAT COMPLETES YOUR VISION

Ruukki's facade claddings offer you endless variations to use in designing your architectural objectives to your project requirements. You can use our products to find your own combination of surface structures, patterns, colours and materials. By using our carefully developed details you will gain our full technical and manufacturing knowhow to support you.

[ruukki.com/facades](https://ruukki.com/facades)



**PRIMO™ SKYLINE RAINSCREEN PANELS**  
**LIBERTA™ RAINSCREEN PANELS FOR FACADES**  
**CLADDING LAMELLAS FOR FACADES**  
**DESIGN PROFILES FOR FACADES**  
**SOLAR PANELS FOR FACADES**  
**BESPOKE ARCHITECTURAL FACADES**  
**FACADE SYSTEMS – RUUKKI® EMOTION**  
**FACADE SYSTEMS – RUUKKI FORMA™**  
**FACADE MATERIALS**  
**FACADE MATERIALS – COR-TEN**  
**TECHNICAL INFORMATION**  
**DESIGN TOOLS**  
**QUALITY**  
**CONTACT DETAILS**

*Eventes Business Garden, Espoo, Finland. Ruukki facade products:  
Liberta™ Elegant 500, Lamella Lap 60, Design Tokyo S18.*



# NEW RUUKKI® PRIMO CLADDING SYSTEM

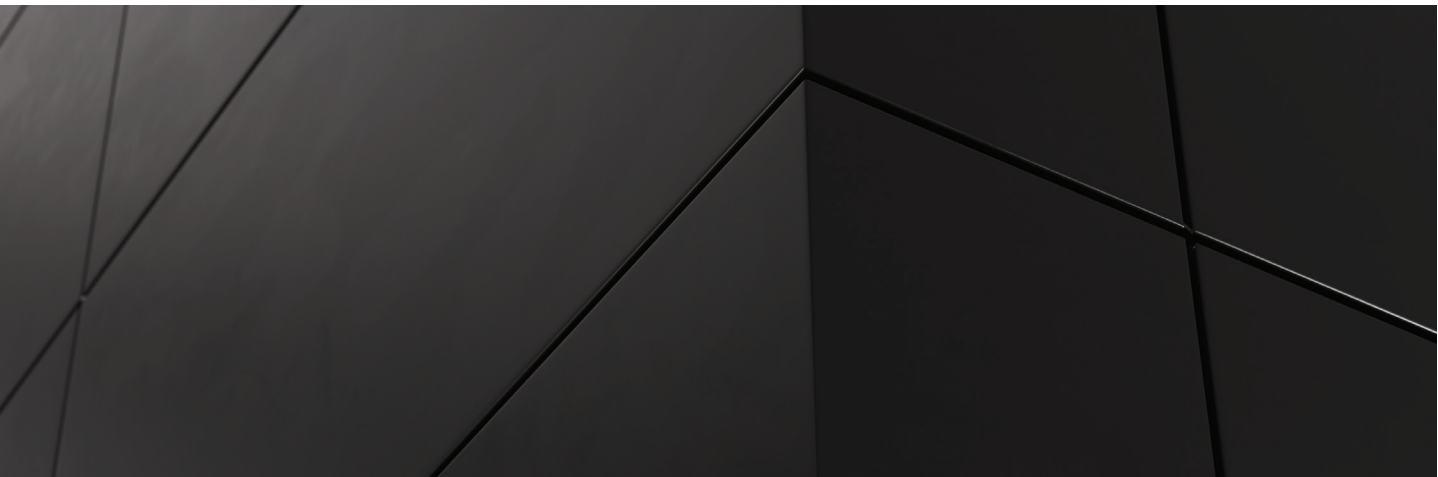
---

[www.ruukki.com/primo](http://www.ruukki.com/primo)

RUUKKI® PRIMO is Ruukki's new premium cladding system with unique design features

- Big flat surfaces enable high-end design solutions
- Tilted joints with continuously adjustable joint widths continuously adjustable joint widths
- Individually replaceable panels
- Clear and sophisticated portfolio
- Extensive design and technical support
- Trusted processes and market-wide expertise

RUUKKI® PRIMO rainscreen panels come in an extensive selection of finishes and colours.



*Primo Skyline 100*







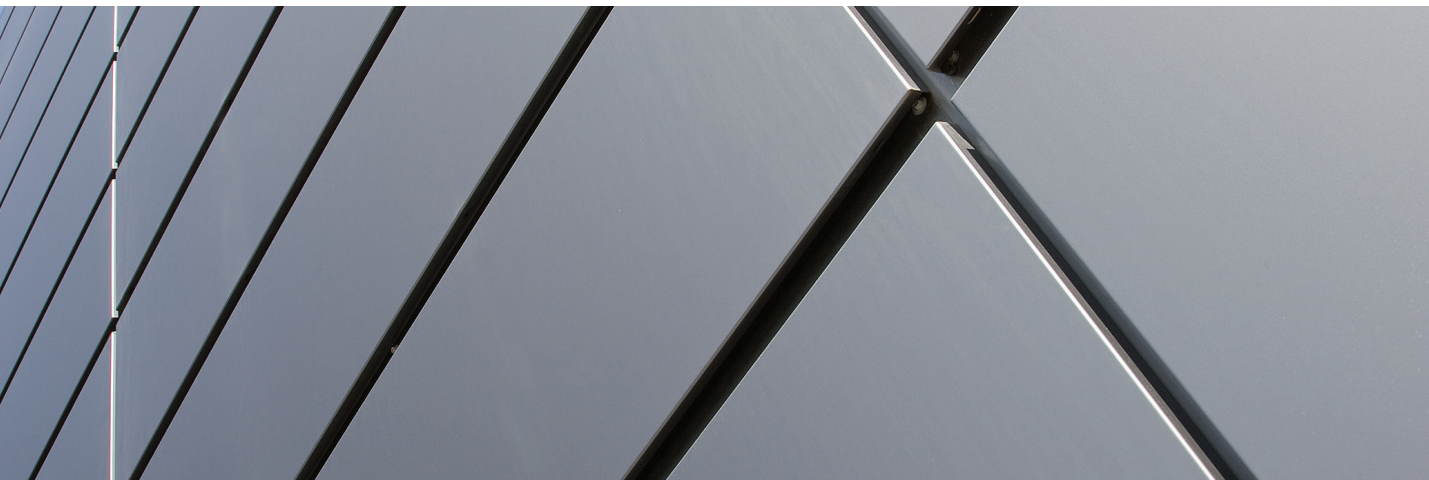
# LIBERTA™ RAINSCREEN PANELS FOR FACADES

[www.ruukki.com/libertapanel](http://www.ruukki.com/libertapanel)

*Skanska Gröna Skrapan, Gothenburg, Sweden.  
Ruukki facade product: Liberta™ Elegant 500.*

Liberta™ rainscreen panels are folded on all sides to offer maximum rigidity for solid metal cassettes with concealed, recessed or visible fixing solutions.

The panel system provides easy and quick installation for a fully finished facade, complete with accessories designed and manufactured to maintain accurate and project-specific dimensions. The panels come in an extensive selection of materials, finishes and colours.



*Liberta™ Elegant 500.*

**SKANSKA**

A low-angle photograph of a modern Skanska office building. The building features a dark grey facade with horizontal bands of large glass windows. The word 'SKANSKA' is prominently displayed in large, white, three-dimensional letters on the upper part of the facade. The sky is a clear, pale blue.





*Maritime Centre Vellamo, Kotka, Finland.  
Ruukki facade product: Lamella Groove 20.*



# CLADDING LAMELLAS FOR FACADES

[www.ruukki.com/lamellas](http://www.ruukki.com/lamellas)



Cladding lamellas are narrower profiles that are folded along two long edges and divide facade surfaces one-directionally, be it vertically, horizontally or at an angle. Variety of shapes in the long edge detail together with hidden and concealed fixings allow you to accentuate the surface division to just the right amount. The lamellas have their own, wide selection of materials, finishes and colours.

*UPS Office, Kaunas, Lithuania.  
Ruukki facade product: Lamella Sharp 45.*





# DESIGN PROFILES FOR FACADES

[www.ruukki.com/profiles](http://www.ruukki.com/profiles)

Design profiles create a continuous, structured facade surface. With options for both profile and material, the scale and attenuation of the surface structure can be matched to meet the architectural needs of the facade in question. The Design Profiles system allows for easy and quick installation of a fully finished facade complete with flashings and accessories that match the facade material finish.



*Stockmann logistic centre, Tuusula, Finland.  
Ruukki facade product: Design Tokyo S18.*

*KOY Helsingin Jallukka, Helsinki, Finland.  
Ruukki facade product: Design Cor-Ten S7.*













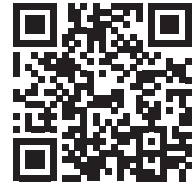
# SOLAR PANELS FOR FACADES

[www.ruukki.com/solarpanels](http://www.ruukki.com/solarpanels)



*Liberta™ Solar.*

Liberta™ solar is a way to integrate renewable energy production within a building, visibly and with high aesthetic quality. The system is both fully functional as a ventilated rainscreen and a photovoltaic panel. Wall installation means that energy yield accumulates for a longer period of the year than with traditional roof installed panels.



*Office building, Vantaa, Finland.  
Ruukki facade product: Liberta™ Solar.*





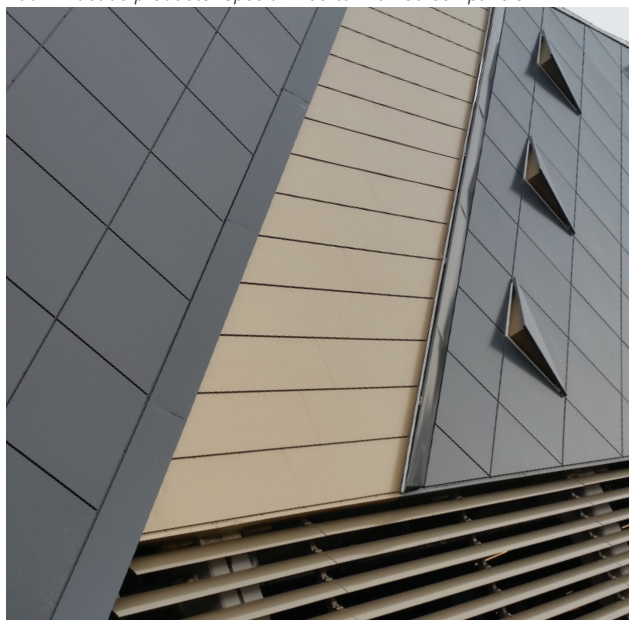
# BESPOKE ARCHITECTURAL FACADES

[www.ruukki.com/bespoke](http://www.ruukki.com/bespoke)

On large projects, which are outside the possibilities of our standard products, the cladding solution can be designed in co-operation to meet the needs of that specific project. Our technical experts will work together with the project architect to ensure architectonic, technical and economic feasibility from early design to building use. The final solution will be just as reliable as tried and tested product solutions.

*MEGA shopping centre, Kazan, Russia.*

*Ruukki facade products: Special Liberta™ rainscreen panels.*



*Film Museum, Tallinn, Estonia.*

*Ruukki facade products: Special Cor-Ten Lamellas.*







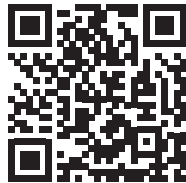


*Zerva house, Skövde, Sweden.  
Ruukki Emotion system with Art -perforated Liberta™ 500  
and white back lighting.*



# FACADE SYSTEMS RUUKKI® EMOTION

[www.ruukki.com/ruukkiemotion](http://www.ruukki.com/ruukkiemotion)



Many of the facade claddings Ruukki has to offer can be perforated in several ways. By perforating design profiles fully their transparency can be adjusted when viewed from a distance. Cassettes and lamellas can be perforated with either evenly or non-evenly distributed holes. The size and distance can be chosen by the customer according to perforation portfolio. They can also be perforated freely to form a picture or a pattern. Ruukki can pixelate any picture to a hole map on actual products. The perforated facades can be backlit by either Ruukki's LED purlins for a flat structure or by other lights.

*Radiosurgery Centre, Sigulda, Latvia.  
Ruukki Emotion system with Art -perforated  
Lamella Cor-Ten 30 and white back lighting.*







## FACADE SYSTEMS RUUKKI FORMA™

[www.ruukki.com/ruukkiforma](http://www.ruukki.com/ruukkiforma)

Ruukki Forma™ is a complete exterior wall system, combining our facade cladding products with the Ruukki® energy panel system. Ruukki Forma™ provides a wide range of aesthetic shape, material and colour options for the simple and efficient sandwich panel exterior walls. High airtightness of the base structure – the Ruukki® energy panel system – can generate up to 30% savings in a building's energy costs, and improve its energy class.

The base structure is also available in the highly sustainable Ruukki Life energy panel version, with approximately 80% recycled material content.



*Logistic centre, Klasov, Slovakia.  
Ruukki Forma system with Liberta™ Elegant 500 Grande.*





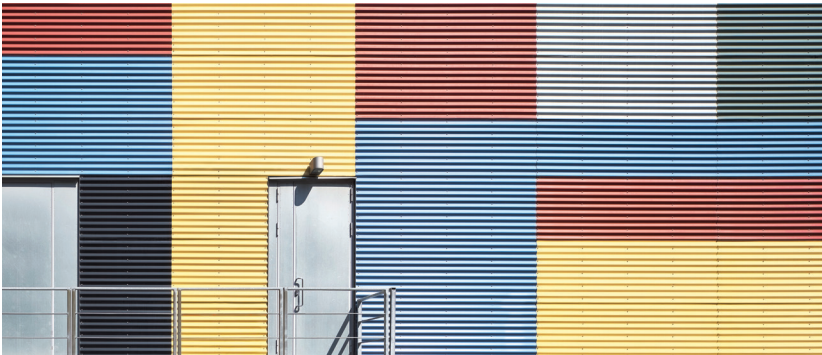


# FACADE MATERIALS

---

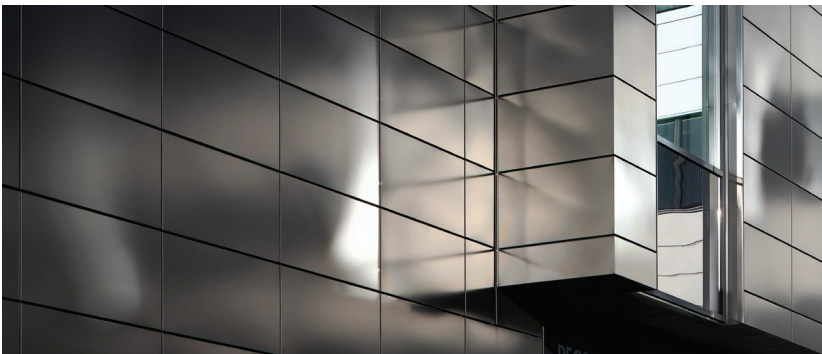
[www.ruukki.com/materials](http://www.ruukki.com/materials)

Our products offer quality, predictability and reliability in endless combinations of shapes, colours and materials. They offer an extremely powerful and wide aesthetical range for use as architectural elements. Their technical properties of product and material combinations are equally versatile, which is why our local experts are ready to help architects and developers in identifying good solutions to meet individual projects' aesthetic, technical and economic conditions.



**COLOUR-COATED STEEL  
AND ALUMINIUM**

---



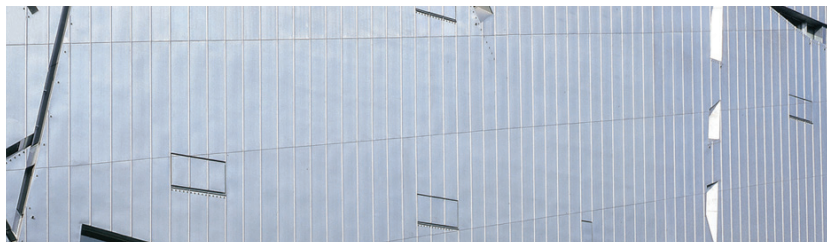
**STAINLESS STEEL**

---



## **RHEINZINK**

---



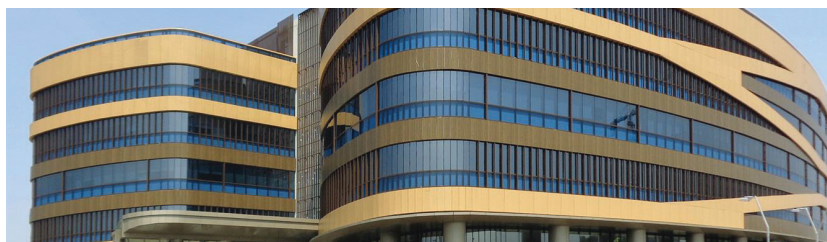
## **BRUSHED ALUMINIUM**

---



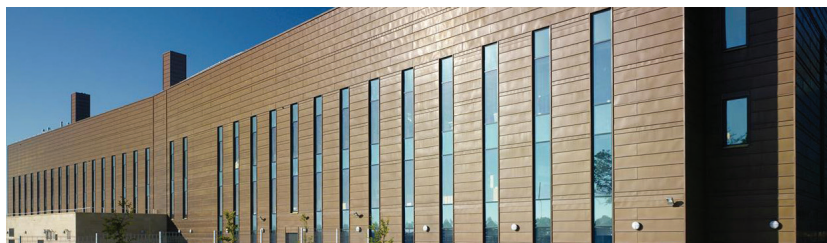
## **PATTERN-PAINTED ALUMINIUM**

---



## **COPPER, BRASS AND BRONZE**

---



## **GLASS**

---





# FACADE MATERIALS COR-TEN

[www.ruukki.com/materials](http://www.ruukki.com/materials)

Cor-Ten is almost pure steel that, in the right conditions, forms a natural, rugged, protective patina. Using Cor-Ten as a face material requires specific structural and chemical know-how. When used correctly Cor-Ten is expressive, long-lasting and maintenance-free material. All of Ruukki's available Cor-ten products are designed and tested to perform reliably. They age continuously in a beautiful, safe and controlled way.



*Tallinn Airport parking station, Tallinn, Estonia.  
Ruukki facade products: Special Cor-Ten lamellas.*

*Arsenal Center, Tallinn, Estonia.  
Ruukki facade products: Special Cor-Ten lamellas.*







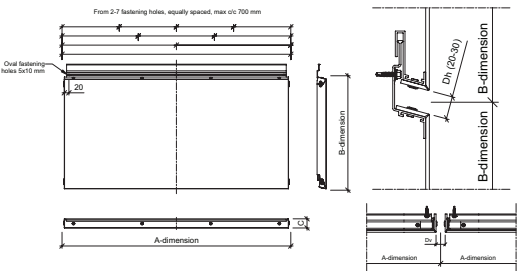


# PRIMO SKYLINE CLADDING SYSTEM



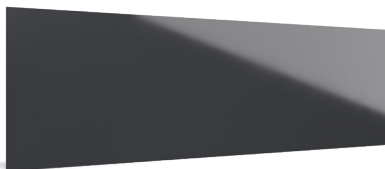
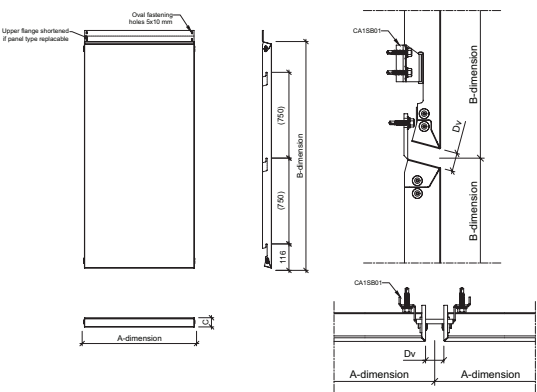
## PRIMO SKYLINE 100

Installation	Horizontal
Width	200 – 4000 mm
Height	200 – 1000 mm
Joint width	5 – 35 mm , continuously adjustable
Fastening style	Hidden fix 5-35 mm or standard fix 21-35 mm (Individually replaceable panel)
Materials	Aluminum, Copper, Brass, Titanzink



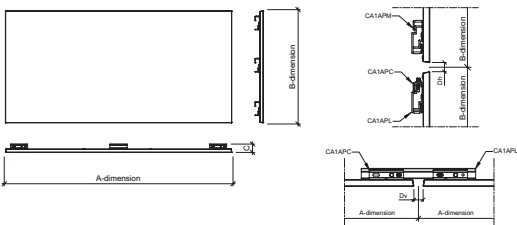
## PRIMO SKYLINE 150

Installation	Vertical
Width	200 – 800 mm
Height	200 – 4000 mm
Joint width	5 – 35 mm , continuously adjustable
Fastening style	Hidden fix 5-20 mm or standard fix 21-35 mm (Individually replaceable panel)
Materials	Aluminum, Copper, Brass, Titanzink



## PRIMO SKYLINE 1000

Installation	Horizontal/Vertical
Min size	200 x 200 mm
Max size	6200 x 1900 mm
Joint width	≥ 5 mm
Fastening style	Hidden fix
Materials	Aluminum, Titanzink honeycomb





# STANDARD COLORS, PRIMO SKYLINE

					
PRIMO BRONZE METALLIC	PRIMO CHAMPAGNE METALLIC	PRIMO COPPER METALLIC	PRIMO DARK GREY METALLIC	PRIMO GREY METALLIC	PRIMO MANGANESE METALLIC
					
PRIMO WHITE METALLIC	PRIMO SILVER METALLIC	PRIMO SMOKE METALLIC	PRIMO SIGNAL YELLOW 1003	PRIMO PURE ORANGE 2004	PRIMO PURPLE RED 3004
					
PRIMO TRAFFIC RED 3020	PRIMO ULTRAMARINE BLUE 5002	PRIMO ANTHRACITE GREY 7016	PRIMO UMBRA GREY 7022	PRIMO LIGHT GREY 7035	PRIMO GREY BROWN 8019
					
PRIMO JET BLACK 9005	PRIMO PURE WHITE 9010				

PVDF 3L – Metallic White, Dark Grey Metallic, Traffic Red 3020

PVDF 2L – Pure White 9010, Copper Metallic, Bronze Metallic, Light Grey 7035, Grey Metallic, Anthracite Grey 7016, Umbra Grey 7022, Silver Metallic, Smoke Metallic, Champagne Metallic, Manganese Metallic, Jet Black 9005, Grey Brown 8019, Purple Red 3004, Signal Yellow 1003, Ultramarine Blue 5002

HQPE – Pure Orange 2004

Also other coating types are available upon request (non-stock material).  
Minimum order size: 125 m2 (standard colours)

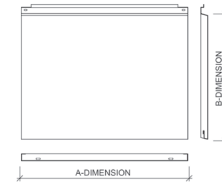


# LIBERTA RAINSCREEN PANEL

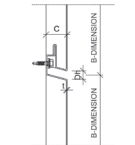


## LIBERTA ELEGANT 500

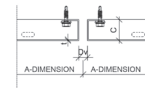
Width	240 – 3000 mm
Height	275 – 900 mm
Depth	25, 30 mm
Horizontal joint	5, 10, 15, 20, 25, 30 mm
Vertical joint	5, 10, 15, 20, 25, 30 mm
Fastening style	Hidden fix
Materials	Steel, Aluminium, Rheinzink, Copper, Brass, Bronze, Stainless steel



HORIZONTAL JOINT

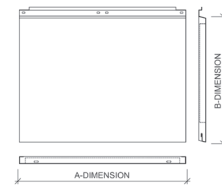


VERTICAL JOINT

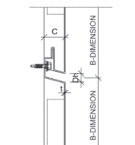


## LIBERTA ELEGANT 500 GRANDE

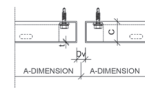
Width	240 – 3000 mm
Height	275 – 800 mm
Depth	25, 30 mm
Horizontal joint	5, 10, 15, 20, 25, 30 mm
Vertical joint	5, 10, 15, 20, 25, 30 mm
Fastening style	Hidden fix
Materials	Steel



HORIZONTAL JOINT

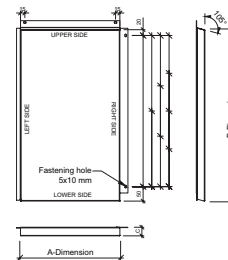


VERTICAL JOINT

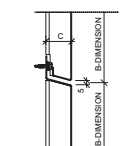


## LIBERTA ELEGANT 550

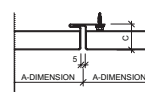
Width	150 – 650 mm
Height	150 – 3000 mm
Depth	25, 30 mm
Horizontal joint	5 mm
Vertical joint	5 mm
Fastening style	Hidden fix
Materials	Steel, Aluminium, Rheinzink, Copper, Brass, Bronze, Stainless steel



HORIZONTAL JOINT



VERTICAL JOINT



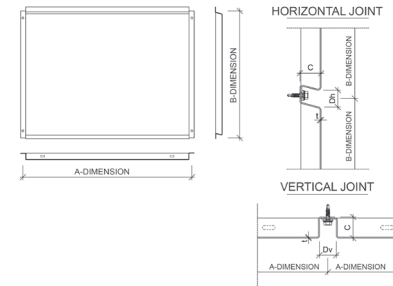


# LIBERTA RAINSCREEN PANEL



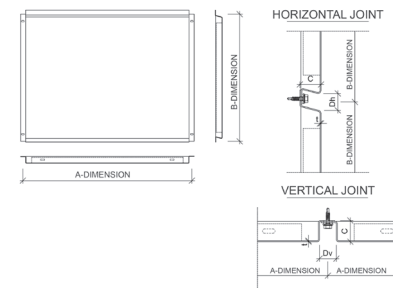
## LIBERTA ORIGINAL 102

Width	100 - 3000 mm
Height	100 - 3000 mm
Depth	20, 25, 30 mm
Horizontal joint	20, 25, 30 mm
Vertical joint	20, 25, 30 mm
Fastening style	Standard fix
Materials	Steel, Aluminium, Rheinzink, Copper, Brass, Bronze, Stainless steel



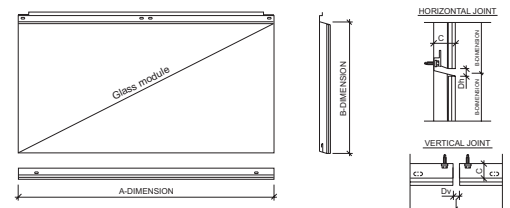
## LIBERTA ORIGINAL 102 GRANDE

Width	100 - 3000 mm
Height	100 - 3000 mm
Depth	25, 30 mm
Horizontal joint	20, 25, 30 mm
Vertical joint	20, 25, 30 mm
Fastening style	Standard fix
Materials	Steel



## LIBERTA GLASS

Width	240 - 1198 mm
Height	275 - 798 mm
Depth	39 mm
Horizontal joint	8 mm
Vertical joint	8 mm
Fastening style	Hidden fix
Materials	Panel frame - steel, Glass module - tempered glass

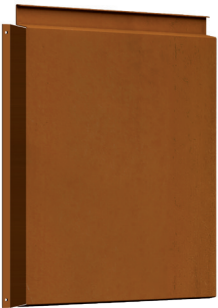
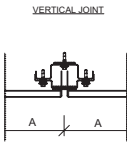
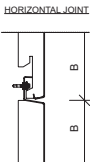
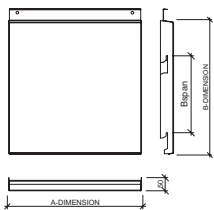


# LIBERTA RAINSCREEN PANEL



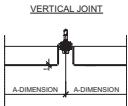
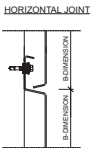
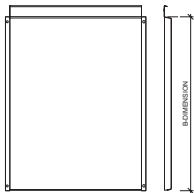
## LIBERTA COR-TEN 800

Width	200 – 1000 mm
Height	200 – 3000 mm
Depth	40 mm
Horizontal joint	10 mm
Vertical joint	10 mm
Fastening style	Hidden fix
Materials	Steel Cor-Ten A, 1.5 mm



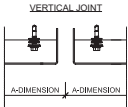
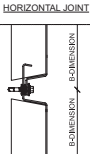
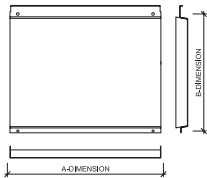
## LIBERTA COR-TEN 700

Width	100 – 1000 mm
Height	100 – 3000 mm
Depth	30 mm
Horizontal joint	10 mm
Vertical joint	20, 25, 30 mm
Fastening style	Standard fix
Materials	Steel Cor-Ten A, 1.5 mm



## LIBERTA COR-TEN 600

Width	100 – 3000 mm
Height	100 – 1000 mm
Depth	30 mm
Horizontal joint	34 mm
Vertical joint	10, 15, 20, 25, 30 mm
Fastening style	Standard fix
Materials	Steel Cor-Ten A, 1.5 mm



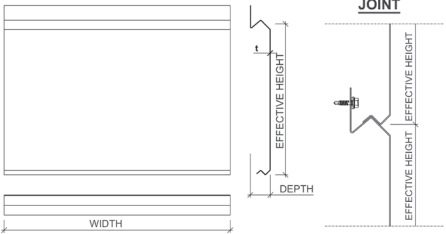


# CLADDING LAMELLA



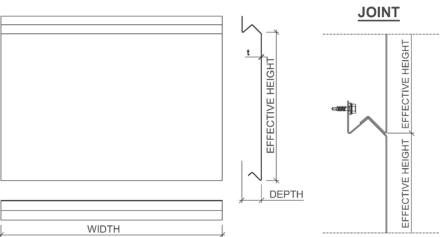
## CLADDING LAMELLA GROOVE 10

Depth	40 mm
Effective height	Standard 300 mm (150...300 mm)
Width	150 - 4000 mm
Fastening style	Hidden fix
Materials	Steel, Aluminium, Rheinzink, Copper, Brass, Bronze, Stainless steel



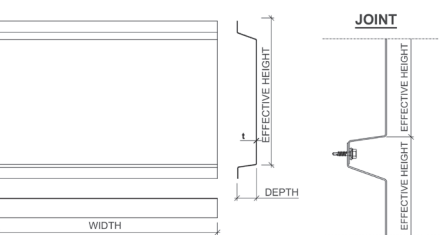
## CLADDING LAMELLA GROOVE 20

Depth	40 mm
Effective height	Standard 300 mm (150...300 mm)
Width	150 - 4000 mm
Fastening style	Hidden fix
Materials	Steel, Aluminium, Rheinzink, Copper, Brass, Bronze, Stainless steel



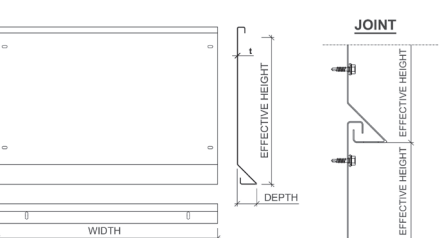
## CLADDING LAMELLA GROOVE 30

Depth	40 mm
Effective height	Standard 300 mm (150...300 mm)
Width	150 - 4000 mm
Fastening style	Standard fix
Materials	Steel 1.2 mm, Aluminium 1.5 mm



## CLADDING LAMELLA SHARP 40

Depth	40 mm
Effective height	Standard 300 mm (150...300 mm)
Width	150...3000 mm
Fastening style	Standard fix
Materials	Steel 1.2 mm, Aluminium 1.5 mm

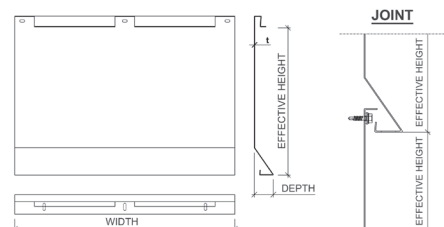


# CLADDING LAMELLA



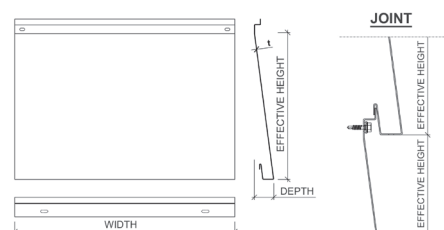
## CLADDING LAMELLA SHARP 45

Depth	40 mm
Effective height	Standard 300 (300...350) mm
Width	150...3000 mm
Fastening style	Hidden fix
Materials	Steel 1.2 mm, Aluminium 1.5 mm



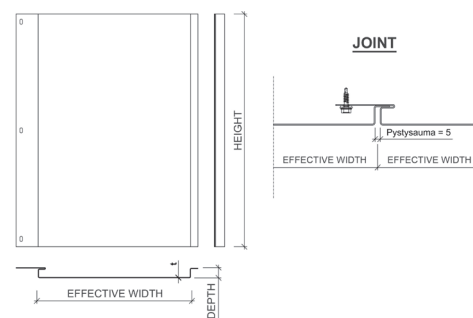
## CLADDING LAMELLA LAP 60

Depth	40 mm
Effective height	300 mm
Width	150...3000 mm
Fastening style	Hidden fix
Materials	Steel, Aluminium, Rheinzink, Copper, Brass, Bronze, Stainless steel



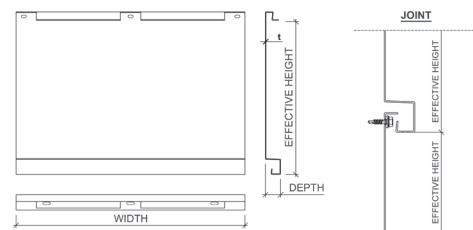
## CLADDING LAMELLA VERTICAL 70

Depth	20 mm
Effective height	Standard 300 (250...500) mm
Width	150...3000 mm
Fastening style	Hidden fix
Materials	Steel, Aluminium, Rheinzink, Copper, Brass, Bronze, Stainless steel



## CLADDING LAMELLA STRAIGHT 100

Depth	30 mm
Effective height	Standard 300 (300...350) mm
Width	150...3000 mm
Fastening style	Hidden fix
Materials	Steel 1.2 mm, Aluminium 1.5 mm



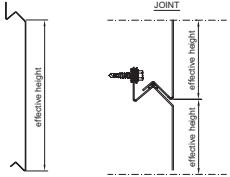
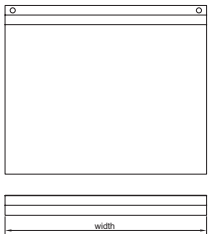


# CLADDING LAMELLA



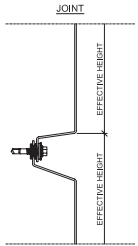
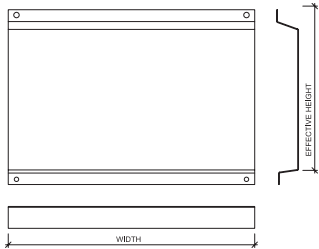
## CLADDING LAMELLA COR-TEN 20

Depth	40 mm
Effective height	Standard 300 (150...600) mm
Width	150...3000 mm
Fastening style	Hidden fix
Materials	Steel Cor-Ten A, 1.5 mm



## CLADDING LAMELLA COR-TEN 30

Depth	40 mm
Effective height	Standard 300 (150...600) mm
Width	150...3000 mm
Fastening style	Standard fix
Materials	Steel Cor-Ten A, 1.5 mm



## STANDARD COLORS, LIBERTA & LAMELLA

### HIARC



### HIARC MATT



Colourful colour chart – HIARC & Powder paint – RR11, RR22, RR24, RR26, RR29, RR30, RR31, RR32, RR33, RR34, RR35, RR36, RR37, RR44, RR45, RR750

Unique colour chart – HIARC & Powder paint – RAL and NCS colours available by request.

Minimum order sizes:

- Standard chart: No limitations
- Colourful & unique chart: HIARC 900 m<sup>2</sup>; Powder paint 100 m<sup>2</sup>

# DESIGN PROFILES



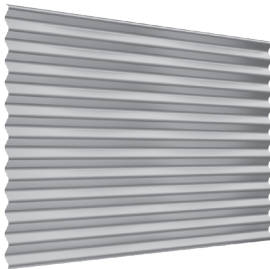
## DESIGN VENICE S10

Depth	10 mm
Effective width	998 mm
Maximum length	7000 mm
Minimum length	500 mm
Materials	Steel 0.6mm, Aluminium 0.7 mm



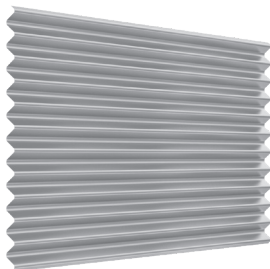
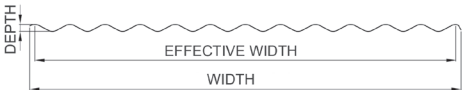
## DESIGN OULU T10A

Depth	10 mm
Effective width	980 mm
Maximum length	3130 mm
Minimum length	200 mm
Materials	Steel 0.6 mm, Aluminium 0.7 mm



## DESIGN TOKYO S18

Depth	18 mm
Effective width	1100 mm
Maximum length	9000 mm
Minimum length	600 mm
Materials	Steel 0.6mm, Aluminium 0.7 mm



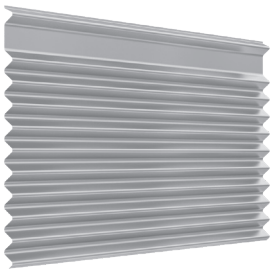
## DESIGN ROME S34

Depth	34 mm
Effective width	898 mm
Maximum length	7000 mm
Minimum length	500 mm
Materials	Steel 0.6mm, Aluminium 0.7 mm



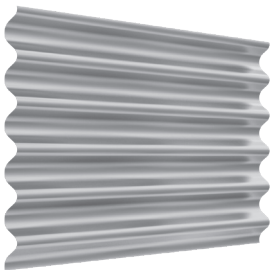
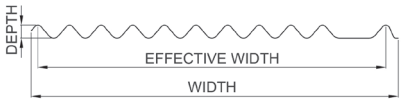


# DESIGN PROFILES



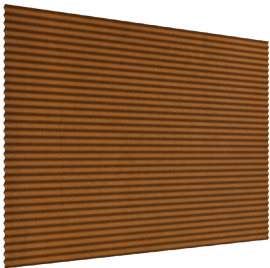
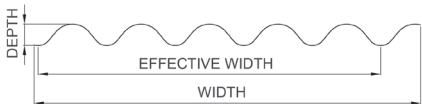
## DESIGN ROME S S34

Depth	34 mm
Effective width	898 mm
Maximum length	7000 mm
Minimum length	500 mm
Materials	Steel 0.6mm, Aluminium 0.7 mm



## DESIGN PARIS S55

Depth	55 mm
Effective width	885mm
Maximum length	7000 mm
Minimum length	500 mm
Materials	Steel 0.6mm, Aluminium 0.7 mm



## DESIGN COR-TEN S7

Depth	6 mm
Effective width	1119 mm
Maximum length	3550 mm
Minimum length	200 mm
Materials	Steel Cor-Ten A, 1.0 mm



## STANDARD COLORS, DESIGN PROFILES

### HIARC

<b>RR20</b> White	<b>RR21</b> Light Grey	<b>RR23</b> Dark Grey	<b>RR24</b> Light Yellow	<b>RR29</b> Red
<b>RR32</b> Dark Brown	<b>RR33</b> Black	<b>RR34</b> Light Blue	<b>RR35</b> Blue	<b>RR40</b> Silver Matt
<b>RR41</b> Dark Silver MAtt	<b>RR42</b> Gold	<b>RR43</b> Copper		

### HIARC MATT

<b>RR40</b> Silver Matt	<b>RR41</b> Dark Silver Matt	<b>RR45</b> Metalic Graphite

Colourful colour chart – HIARC & Powder paint – RR11, RR22, RR24, RR26, RR29, RR30, RR31, RR32, RR33, RR34, RR35, RR36, RR37, RR44, RR45, RR750.

Colourful colour chart – Powder paint – RAL 2000, RAL 2001, RAL 3003, RAL 6019, RAL 6027, RAL 9010

Unique colour chart – HIARC & Powder paint RAL and NCS colours available by request.

Minimum order sizes:

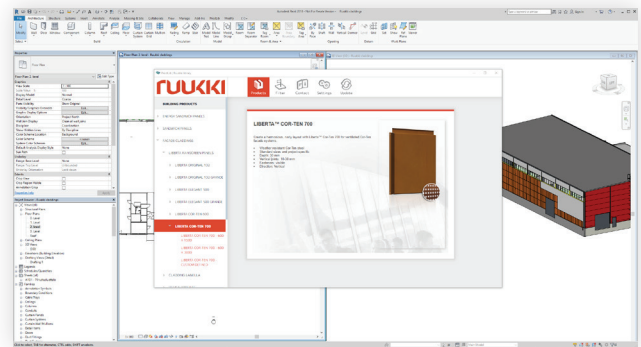
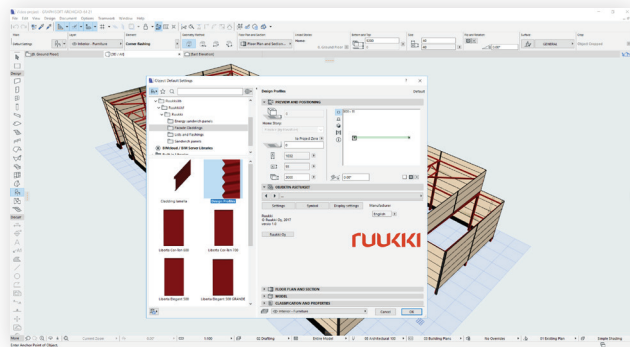
- Standard chart: No limitations
- Colourful & unique chart: HIARC 2000 m<sup>2</sup>; Powder paint 100 m<sup>2</sup>

# DESIGN TOOLS

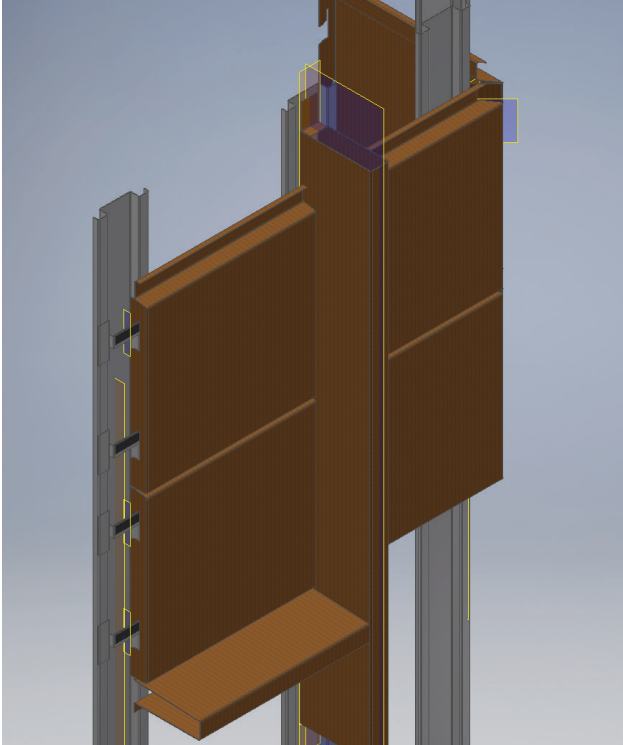
[www.ruukki.com/tools](http://www.ruukki.com/tools)

## BIM OBJECTS

One of the benefits of using Ruukki's established cladding products is that they come with design tools. The products have been modelled into both Revit and ArchiCAD objects. The most typical details are available for AutoCAD. Using the design tools is one way of assuring a smooth project flow.



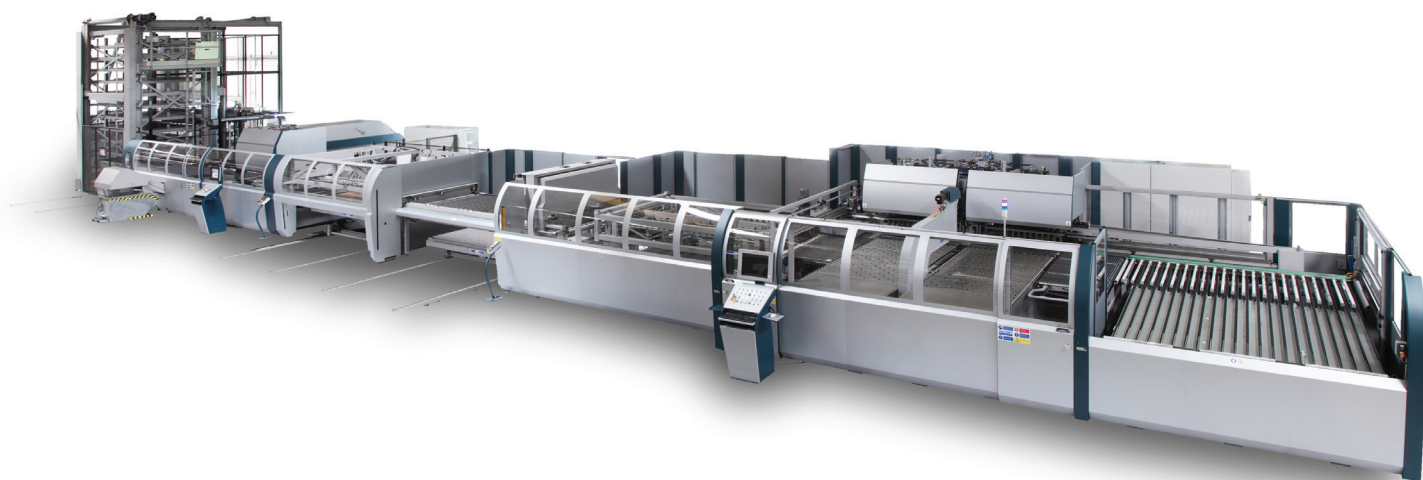




## DESIGN SUPPORT

Ruukki's experienced designers can also help in developing project specific details, and show how interface details work between standard and bespoke details. We are available to offer support at pre-specification stage to assist in developing details and specifications that offer a degree of cost certainty from an early stage.

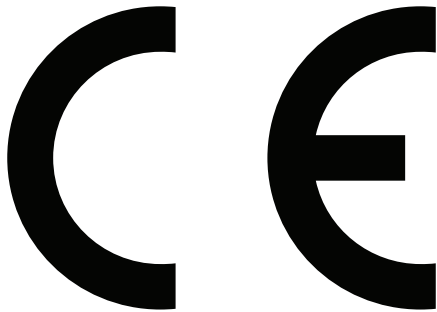






# QUALITY

[www.ruukki.com/quality](http://www.ruukki.com/quality)



The quality of a facade cladding depends on several factors. Coatings and materials have to be able to withstand the UV and chemical strains. Components have to be simple and safe to install at height. And of course the workmanship of each individual part manufactured has to be perfect.

Ruukki's products are produced with fully automated production lines to ensure consistent quality. This together with high quality materials enables us to provide up to a 50 year warranty. All Ruukki's facade cladding products are CE-marked according to relevant EN standards.



Engineering and construction company Rauta is the leading supplier of reliable building solutions in Ukraine and European Union.

Rauta provides complete solutions including: building design, supply of frames, sandwich panels, facades, prefabricated buildings, fireproofing, as well as installation and related services.

The company uses only certified European produced materials. Rauta is the exclusive supplier to Ukraine of Ruukki commercial products and the developer of innovations that reduce the cost and term of construction.

Everything we construct is building our reputation!

**RAUTA**  
RELIABLE SOLUTIONS

Starokyivska str. 10G,  
Kyiv, Ukraine, 04116, BC Vector  
+38 044 364-85-73  
[info@rautagroup.com](mailto:info@rautagroup.com)  
[www.rautagroup.com](http://www.rautagroup.com)

This publication is accurate to the best of our knowledge and understanding. Although every effort has been made to ensure accuracy, the company does not assume any responsibility for any errors or omissions, or any direct, indirect or consequential damage caused by incorrect application of the information. We reserve the right to make changes. Always use original standards for accurate comparison. For latest technical updates, please visit [www.rautagroup.com](http://www.rautagroup.com)

