

Accessories for sandwich panels

Content

1. Flashings	5	1.4 Plinth flashing	34
1.1. Roof flashings	5	• EA1B01 - Plinth flashing	34
• EA1B09 - Top ridge flashing	5	• EA1B02 - Plinth flashing	35
• EA1B10 - Bottom ridge flashing	5	1.5. Opening flashings	36
• EA1B06 - Attic flashing	6	• EA1B15 - Wall opening flashing	36
• EA1EP - Eave purlin	7	• EA1D - Door frame stud	37
• EA1B12 - Top ridge flashing	8	• EA1W - Window frame stud	38
• EA1B14 - Peak flashing	9	• EA1U - Plinth track	39
• EA1B11 - Drip roof flashing	10	1.6. Support studs	41
• EA1B21 - Drip roof flashing	10	• CA1SS1 - Support stud	41
• EA1B24 - Drip roof flashing	11	• CA1SS2 - Support stud	41
• EA1B25 - Drip roof flashing	11	• CA1RS - Support stud	42
• EA1B19 - Roof flashing	12	• CA1SSC1 - Support stud corner	42
• EA1B37 - Eaves flashing	13	1.7. Design Panels	43
• EA1B20 - Assembly flashing	14	• DP H1 - horizontal panel	43
• EA1B13 - Side ridge flashing	15	• DP H3 - horizontal panel	44
• EA1B18 - Roof flashing	15	• DP V3 - vertical panel	44
1.2. Joint flashings between roof and wall	16	• DP V4 - vertical panel	45
• EA1B30 - Joint flashing	16	2. Fasteners	46
• EA1B31 - Joint flashing	16	• L01 and L02	46
• EA1B39 - Joint flashing	17	• L03	47
• EA1B38 - Joint flashing	17	• L07	47
1.3. Wall flashings	18	• L06	47
• EA1B16 - Joint flashing	18	• L15	48
• EA1B35 - Vertical flashing	18	• L16	48
• EA1B36 - Vertical flashing	19	• L16 C/N	49
• EA1B43 - Assembly flashing	19	3. Gaskets	50
• EA1B23 - Joint flashing	20	• 20 x 30 Impregnated polyurethane gasket	50
• EA1B40 - Joint flashing	21	• 20 x 50 Impregnated polyurethane gasket	50
• EA1B41 - Assembly flashing	21	• 4 x 20 Self-adhesive polyurethane gasket	50
• EA1EC9 - External corner flashing	22	• 8 x 40 Self-adhesive polyurethane gasket	51
• EA1EC10 - External corner flashing	23	• U01	51
• EA1B03 - Corner flashing	24	4. Other	52
• EA1B05 - Corner flashing	25		
• EA1B28 - Corner flashing	26		
• EA1B45 - Corner flashing	27		
• EA1B42 - Corner flashing	28		
• EA1B44 - Cover strip	29		
• EA1B22 - Drip wall flashing	30		
• EA1B29 - Wall opening flashing	30		
• EA1B32 - Drip wall flashing	31		
• EA1B33 - Drip wall flashing	31		
• EA1P1 - Plinth flashing	32		
• EA1P3 - Plinth flashing	32		
• EA1B07 - Drip wall flashing	33		
• EA1B08 - Drip wall flashing	33		

Introduction

This document presents basic accessories for Ruukki sandwich panels.

Standard flashings for finishing the joints of Ruukki sandwich panels are made of zinc-coated steel sheet protectively coated with polyester varnish SP25 µm and additionally protected with foil.

For flashings in metallic colours the foil is additionally marked with arrows. It helps to define the right direction of installation and eliminates colour differences.

There is a possibility of using GreenCoat Hiarc 27 µm, GreenCoat Hiarc max 40 µm, PVC(F) 120 µm or Csafe coatings depending on the corrosivity class.

On special request, we make convergent flashings and flashings with undercut edges of a length undercut up to 100 mm.

The maximum length of all flashings made of coated steel is 6 m. Length and bendability of galvanized steel flashings depends on the sheet thickness and is in accordance with the table below:

Thickness [mm] \ Length [m]	0.6	1	1.25	1.5	2	2.5	3
to 6.0 m	✓	✓	✓	✓			
to 4.0 m	✓	✓	✓	✓	✓		
to 2.5 m	✓	✓	✓	✓	✓	✓	✓

There is a possibility of making galvanized flashings, powder coated to any RAL colour.

On special order, we can provide our customers with profiles made of hot-dip galvanized steel sheets.

The offer includes:

- L profiles
- Z profiles
- U profiles semi-enclosed rectangular
- U profile open rectangular
- flashings
- and others.

On special request we also offer flashings made of stainless steel.

Flashings are made in v class tolerances in accordance with PN-EN 22768-1.

Self-drilling fasteners for hot-rolled structures (wall thickness 4.0 – 12.0 mm) or cold-bent structures (wall thickness 2.0 – 5.0 mm) are available in galvanized, painted or INOX versions. On special request it is possible to provide fasteners painted in a sandwich panel's colour.

It is possible to rent special tools for lifting Ruukki panels horizontally or vertically.

In case of any doubts, please follow the instructions of a structural designer or contact our technical support (see the back cover for contact details).

Panel cores made of polyisocyanurate and mineral wool are called respectively PIR and MW for the purpose of this catalogue.

Standard colours of the flashings	1015	3009	3013	5005	6011	7015	7016	7035	9002	9006	9007	9010

1. Flashings

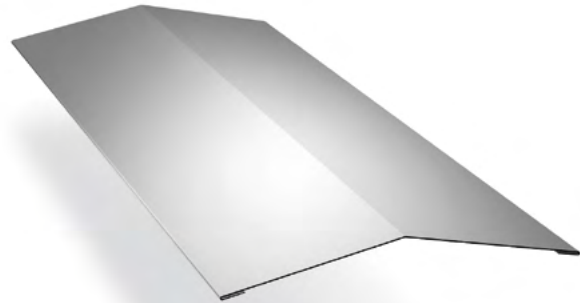
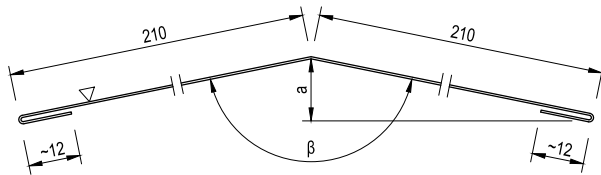
1.1. Roof flashings

Top ridge flashing

EA1B09

Applications:

- top flashing for roof ridge
- all types of Ruukki roof panels



Symbol	a	β	Length ¹	Weight ²	Roof inclination
	[mm]	[°]	[mm]	[kg]	[%]
EA1B09A3000	24	169	3000	5.328	10
EA1B09B3000	44	157	3000	5.328	20

¹ a maximum length up to 6000 mm

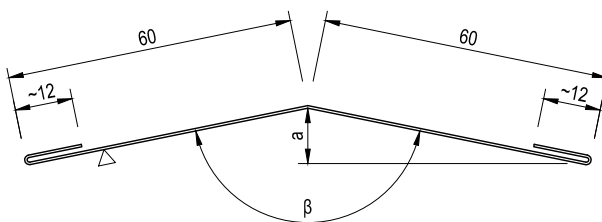
² weight calculated for sheet thickness 0.5 mm (flashings available also in thickness 0.6 mm)

Bottom ridge flashing

EA1B10

Applications:

- bottom flashing for roof ridge
- all types of Ruukki roof panels



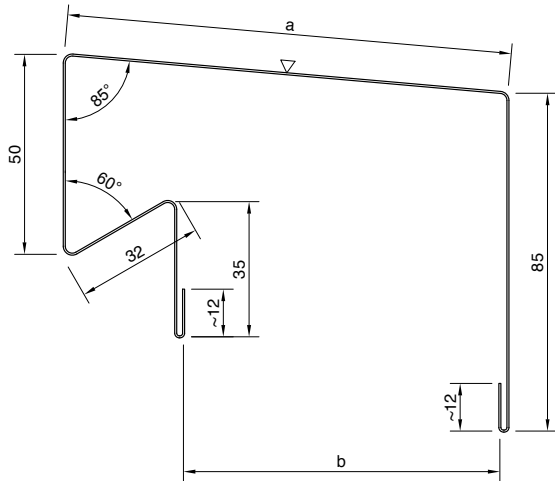
Symbol	a	β	Length ¹	Weight ²	Roof inclination
	[mm]	[°]	[mm]	[kg]	[%]
EA1B10A3000	6	169	3000	1.728	10
EA1B10B3000	12	157	3000	1.728	20

¹ a maximum length up to 6000 mm

² weight calculated for sheet thickness 0.5 mm (flashings available also in thickness 0.6 mm)

Attic flashing
EA1B06

Applications:
• attic flashing



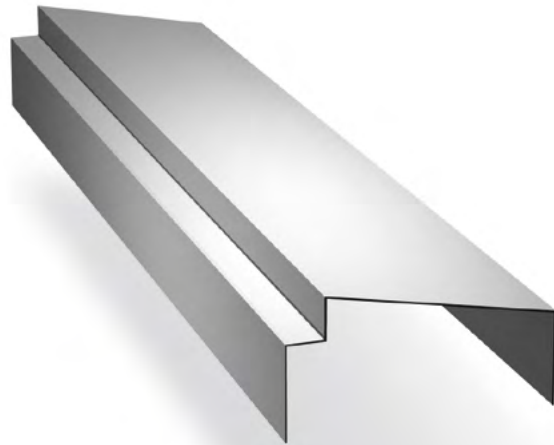
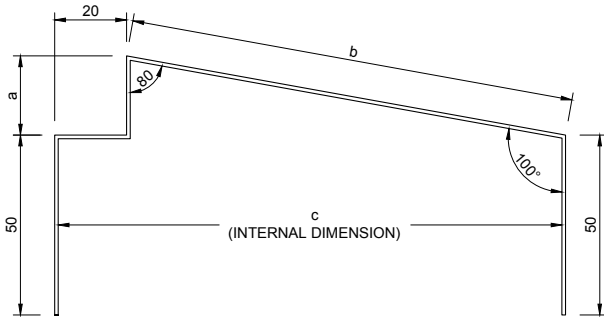
Symbol	a	b	Length ¹	Weight ²
	[mm]	[mm]	[mm]	[kg]
EA1B06A3000	72	40	3000	3.576
EA1B06B3000	92	60	3000	3.816
EA1B06D3000	112	80	3000	4.056
EA1B06E3000	132	100	3000	4.296
EA1B06R3000	142	110	3000	4.416
EA1B06F3000	152	120	3000	4.536
EA1B06G3000	172	140	3000	4.776
EA1B06H3000	182	150	3000	4.896
EA1B06K3000	192	160	3000	5.016
EA1B06O3000	202	170	3000	5.136
EA1B06L3000	212	180	3000	5.256
EA1B06I3000	232	200	3000	5.496
EA1B06P3000	262	230	3000	5.856

¹ a maximum length up to 6000 mm

² weight calculated for sheet thickness 0.5 mm (flashings available also in thickness 0.6 mm)

Eave purlin EA1EP

- Applications:
- attic flashing
 - all types of Ruukki wall panels



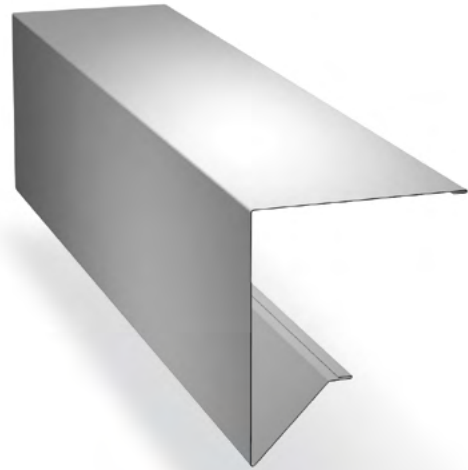
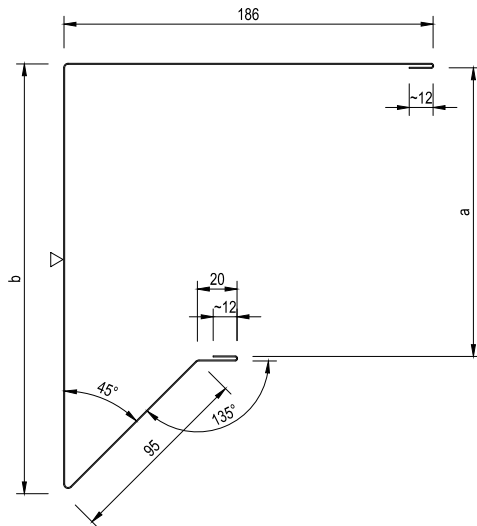
Symbol	a	b	c	Length	Weight ¹	Panel thickness
	[mm]	[mm]	[mm]	[mm]	[kg]	[mm]
EA1EP80	11	63	82	5995	9.112	80
EA1EP100	14	83	102	5995	10.215	100
EA1EP110	17	94	112	5995	10.887	110
EA1EP120	18	104	122	5995	11.414	120
EA1EP140	22	124	142	5995	12.566	140
EA1EP150	24	134	154	5995	13.141	150
EA1EP160	25	144	162	5995	13.669	160
EA1EP170	27	154	174	5995	14.244	170
EA1EP180	28	164	182	5995	14.772	180
EA1EP200	32	185	202	5995	15.971	200
EA1EP230	36	215	235	5995	17.601	230

¹ weight calculated for sheet thickness 1.0 mm
Material: galvanized steel plate

Top ridge flashing EA1B12

Applications:

- roof top flashing
- all types of Ruukki roof panels



Symbol	a	b	Length ¹	Weight ²
	[mm]	[mm]	[mm]	[kg]
EA1B12A3000	80	150	3000	5.688
EA1B12B3000	100	170	3000	5.928
EA1B12C3000	120	190	3000	6.168
EA1B12D3000	140	210	3000	6.408
EA1B12G3000	160	230	3000	6.660
EA1B12E3000	190	260	3000	7.008
EA1B12F3000	210	280	3000	7.260

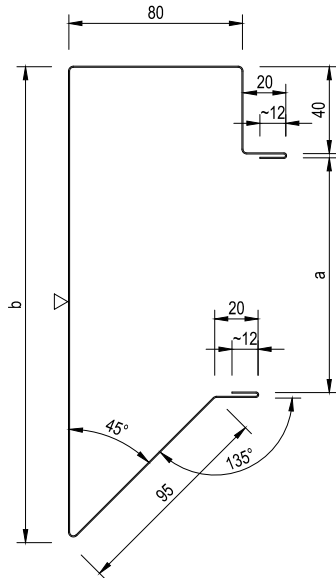
¹ a maximum length up to 6000 mm

² weight calculated for sheet thickness 0.5 mm (flashings available also in thickness 0.6 mm)

Peak flashing
EA1B14

Applications:

- roof top flashing
- all types of Ruukki roof panels



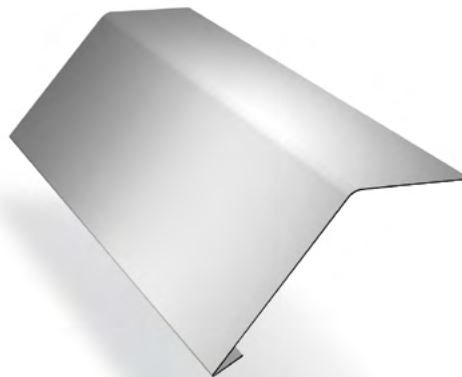
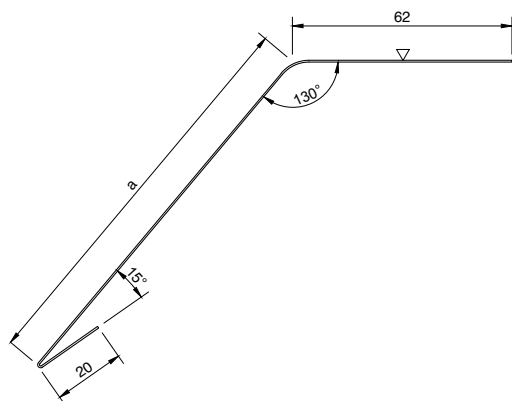
Symbol	a	b	Length ¹	Weight ²
	[mm]	[mm]	[mm]	[kg]
EA1B14A3000	40	150	3000	5.112
EA1B14B3000	60	170	3000	5.352
EA1B14C3000	80	190	3000	5.592
EA1B14D3000	100	210	3000	5.832
EA1B14G3000	120	230	3000	6.072
EA1B14E3000	150	260	3000	6.432
EA1B14F3000	170	280	3000	6.672

¹ a maximum length up to 6000 mm

² weight calculated for sheet thickness 0.5 mm (flashings available also in thickness 0.6 mm)

Drip roof flashing
EA1B11

Applications:
 • roof drip
 • all types of Ruukki roof panels



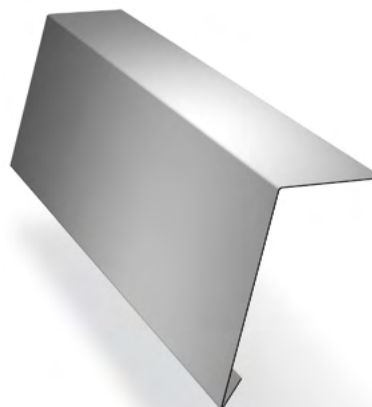
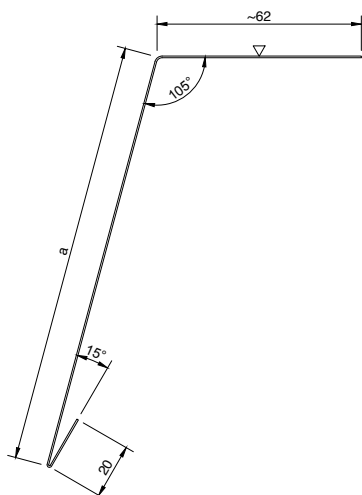
Symbol	a	Length ¹	Weight ²
	[mm]	[mm]	[kg]
EA1B11A3000	72	3000	1.848
EA1B11B3000	92	3000	2.088
EA1B11C3000	112	3000	2.382
EA1B11D3000	132	3000	2.568

¹ a maximum length up to 6000 mm

² weight calculated for sheet thickness 0.5 mm (flashings available also in thickness 0.6 mm)

Drip roof flashing
EA1B21

Applications:
 • roof drip
 • for Ruukki roof panels SPC W



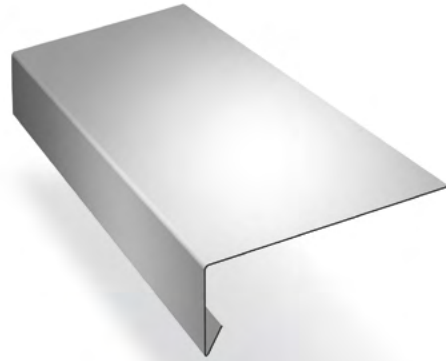
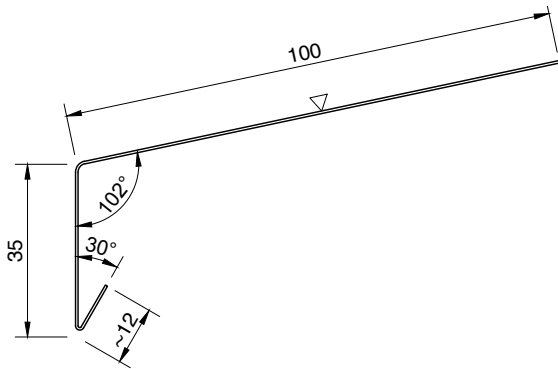
Symbol	a	Length ¹	Weight ²	Panel thickness
	[mm]	[mm]	[kg]	[mm]
EA1B21A3000	130	3000	2.544	140 / 100
EA1B21B3000	180	3000	3.144	190 / 150

¹ a maximum length up to 6000 mm

² weight calculated for sheet thickness 0.5 mm (flashings available also in thickness 0.6 mm)

Drip roof flashing EA1B24

- Applications:
- roof drip
 - all types of Ruukki roof panels



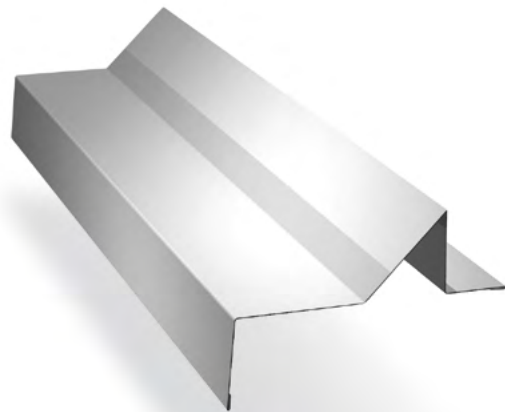
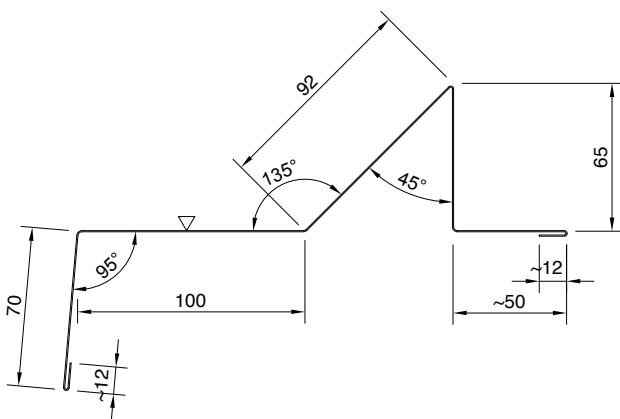
Symbol	Length ¹	Weight ²
	[mm]	[kg]
EA1B24A3000	3000	1.764

¹ a maximum length up to 6000 mm

² weight calculated for sheet thickness 0.5 mm (flashings available also in thickness 0.6 mm)

Drip roof flashing (snow) EA1B25

- Applications:
- roof drip
 - all types of Ruukki roof panels



Symbol	Length ¹	Weight ²
	[mm]	[kg]
EA1B25A3000	3000	4.800

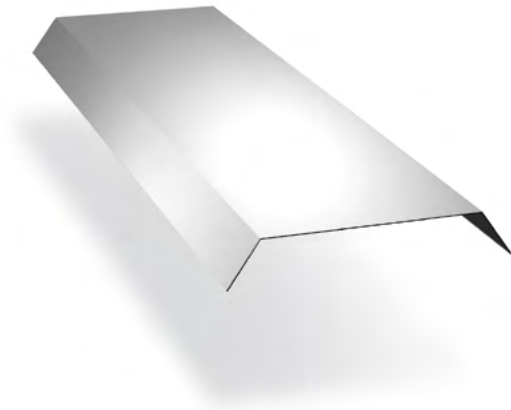
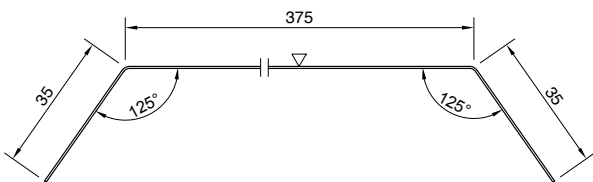
¹ a maximum length up to 6000 mm

² weight calculated for sheet thickness 0.5 mm (flashings available also in thickness 0.6 mm)

Roof flashing
EA1B19

Applications:

- flashing for roof base
- all types of Ruukki roof panels



Symbol	Length ¹	Weight ²
	[mm]	[kg]
EA1B19A3000	3000	5.340

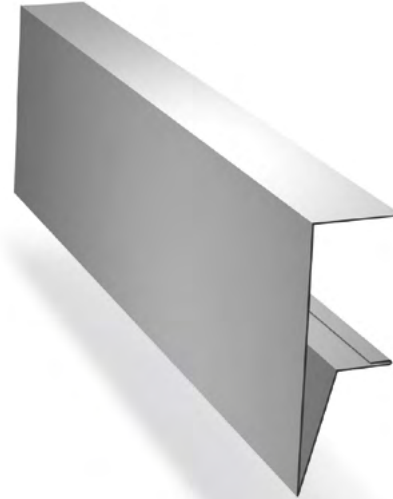
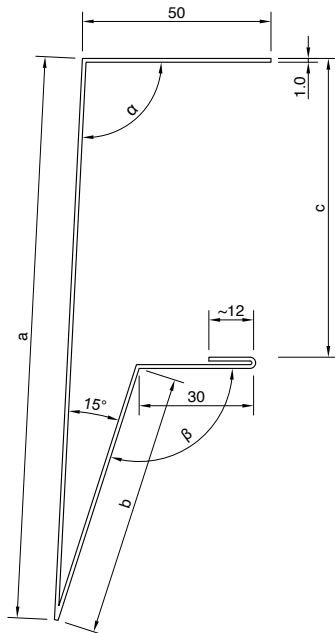
¹ a maximum length up to 6000 mm

² weight calculated for sheet thickness 0.5 mm (flashings available also in thickness 0.6 mm)

Eaves flashing EA1B37

Applications:

- joint between roof and wall in the drip (outside)
- all types of Ruukki roof panels



Symbol	Roof inclination ¹	a	b	c	α	β	Length ²	Weight ³
	%	[mm]	[mm]	[mm]	[°]	[°]	[mm]	[kg]
EA1B37A3000	5	150	113	40	93	108	3000	8.520
EA1B37B3000	5	150	92	60	93	108	3000	8.016
EA1B37C3000	5	150	71	80	93	108	3000	7.512
EA1B37D3000	5	150	50	100	93	108	3000	7.008
EA1B37K3000	5	180	60	120	93	108	3000	7.968
EA1B37E3000	5	180	29	150	93	108	3000	7.224
EA1B37L3000	5	200	30	170	93	108	3000	7.728
EA1B37F3000	10	150	115	40	96	111	3000	8.568
EA1B37G3000	10	150	93	60	96	111	3000	8.040
EA1B37H3000	10	150	72	80	96	111	3000	7.536
EA1B37I3000	10	150	51	100	96	111	3000	7.032
EA1B37M3000	10	180	61	120	96	111	3000	7.992
EA1B37J3000	10	180	29	150	96	111	3000	7.224
EA1B37N3000	10	200	31	170	96	111	3000	7.752

¹ individual flashing required for other roof inclination values

² a maximum length up to 6000 mm

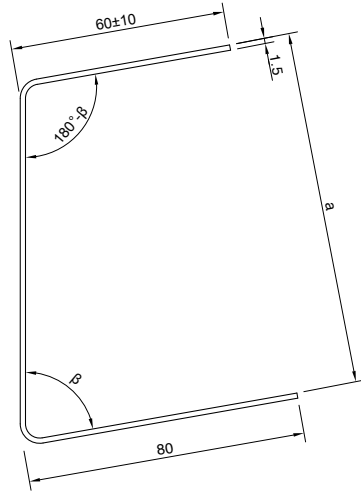
³ weight calculated for sheet thickness 1.0 mm

Material: galvanized steel plate

Assembly flashing
EA1B20

Applications:

- gutter fastening
- all types of Ruukki roof panels, except for Ruukki SP2C80/40 PIR and SP2C100/60 PIR



Symbol	a	β	Length ¹	Weight ²
	[mm]	[°]	[mm]	[kg]
EA1B20C2500	80	60°-90°	2500	6.600
EA1B20A2500	100	64°-90°	2500	7.200
EA1B20D2500	120	68°-90°	2500	7.800
EA1B20B2500	150	72°-90°	2500	8.700
EA1B20E2500	170	74°-90°	2500	9.300

* It is required to specify β angle in the order (depending on a roof inclination)

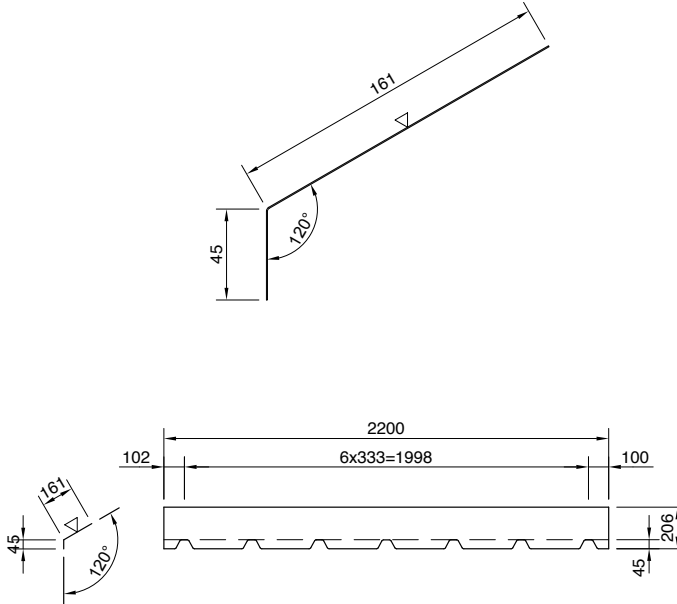
¹ a maximum length up to 6000 mm

² weight calculated for sheet thickness 1.5 mm

Material: galvanized steel plate

Side ridge flashing
EA1B13

- Applications:
- ridge strip at the roof edge
 - all types of Ruukki roof panels

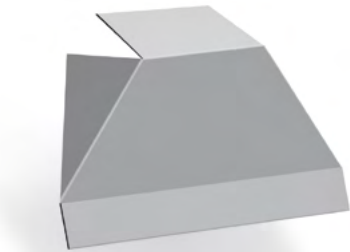
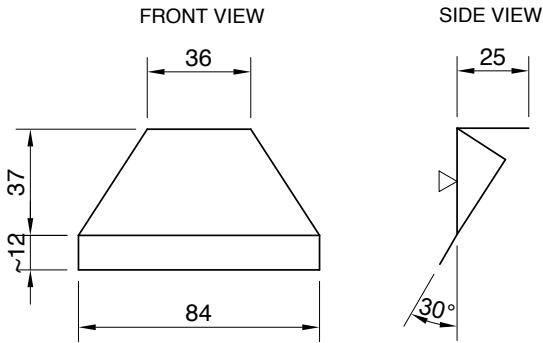


Symbol	Length	Weight ¹
	[mm]	[kg]
EA1B13A2200	2200	1.813

¹ weight calculated for sheet thickness 0.5 mm (flashings available also in thickness 0.6 mm)

Roof flashing
EA1B18

- Applications:
- flashing for the roof base
 - all types of Ruukki roof panels



Symbol	Dimensions	Weight ¹
	[mm]	[kg]
EA1B18A	0.5 x 74 x 84	0.025

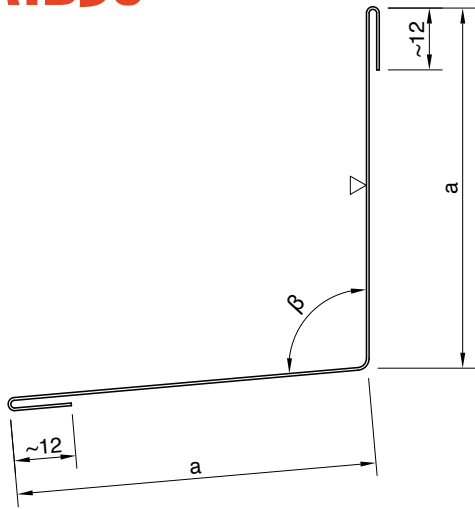
¹ weight calculated for sheet thickness 0.5 mm (flashings available also in thickness 0.6 mm)

1.2. Joint flashings between roof and wall

**Joint flashing
EA1B30**

Applications:

- joint between roof and wall in the drip (inside)
- all types of Ruukki panels



Symbol	a	β	Length ¹	Weight ²
	[mm]	[°]	[mm]	[kg]
EA1B30B3000	40	*	3000	1.248
EA1B30A3000	70	*	3000	1.968

* It is required to specify β angle in the order (depending on a roof inclination)

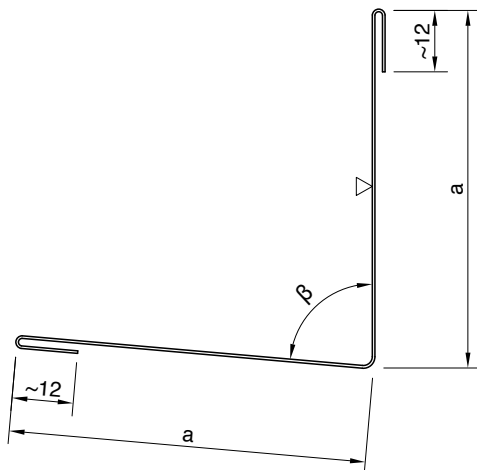
¹ a maximum length up to 6000 mm

² weight calculated for sheet thickness 0.5 mm (flashings available also in thickness 0.6 mm)

**Joint flashing
EA1B31**

Applications:

- joint between roof and wall in the drip (outside)
- all types of Ruukki panels



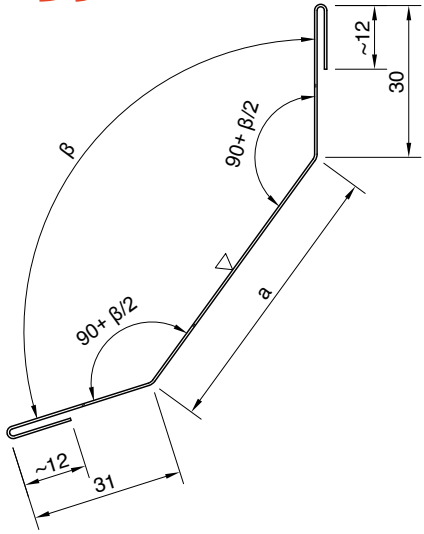
Symbol	a	β	Length ¹	Weight ²
	[mm]	[°]	[mm]	[kg]
EA1B31B3000	40	*	3000	1.248
EA1B31A3000	70	*	3000	1.968

* It is required to specify β angle in the order (depending on a roof inclination)

¹ a maximum length up to 6000 mm

² weight calculated for sheet thickness 0.5 mm (flashings available also in thickness 0.6 mm)

Joint flashing
EA1B39



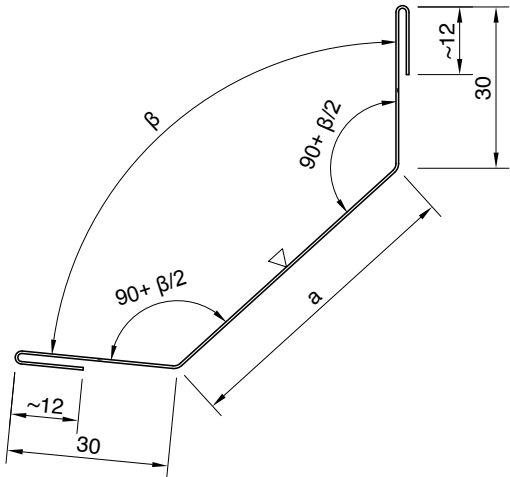
- Applications:
- joint between roof and wall in the drip (outside)
 - all types of Ruukki panels



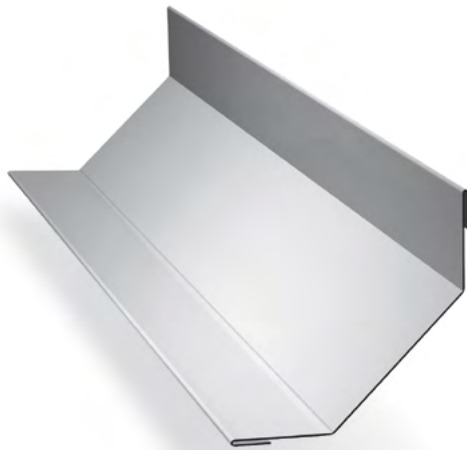
Symbol	a	β	Length ¹	Weight ²
	[mm]	[°]	[mm]	[kg]
EA1B39A3000	57	*	3000	1.692

* It is required to specify β angle in the order (depending on a roof inclination)
¹ a maximum length up to 6000 mm
² weight calculated for sheet thickness 0.5 mm (flashings available also in thickness 0.6 mm)

Joint flashing
EA1B38



- Applications:
- joint between roof and wall in the drip (inside)
 - all types of Ruukki panels



Symbol	a	β	Length ¹	Weight ²
	[mm]	[°]	[mm]	[kg]
EA1B38A3000	57	*	3000	1.692

* It is required to specify β angle in the order (depending on a roof inclination)
¹ a maximum length up to 6000 mm
² weight calculated for sheet thickness 0.5 mm (flashings available also in thickness 0.6 mm)

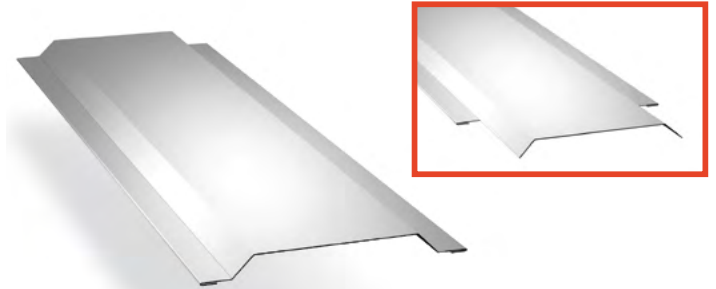
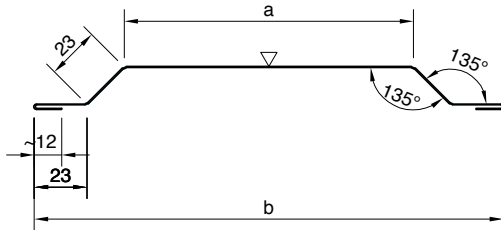
1.3. Wall flashing

Joint flashing

EA1B16

Applications:

- flashing for vertical joint
- Ruukki wall panels in horizontal arrangement,
- flashing can be made with edges cut maximally at 100 mm length



Symbol	a	b	Length ¹	Weight
	[mm]	[mm]	[mm]	[kg]
EA1B16A3000 ⁴	126	205	3000	2.904 ²
EA1B16A3400 ⁴	126	205	3400	3.949 ³
EA1B16B3000	200	279	3000	3.792 ²
EA1B16B3400	200	279	3400	5.157 ³

¹ a maximum length up to 6000 mm

² weight calculated for sheet thickness 0.5 mm (flashings available also in thickness 0.6 mm)

³ weight calculated for sheet thickness 0.6 mm (flashings available also in thickness 0.5 mm)

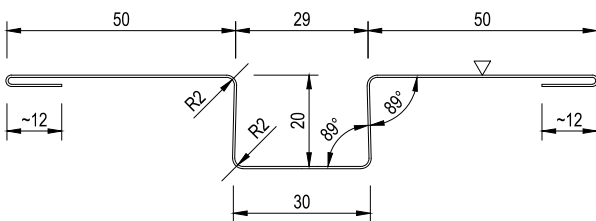
⁴ application: Ruukki wall panels except panels with WEE core

Vertical flashing

EA1B35

Applications:

- flashing for vertical joint
- all types of Ruukki wall panels in horizontal arrangement except panels with WEE mineral wool core
- installed to EA1B43 assembly flashing
- can be installed with cover strip EA1B44



Symbol	Length ¹	Weight ²
	[mm]	[kg]
EA1B35A3000	3000	2.280

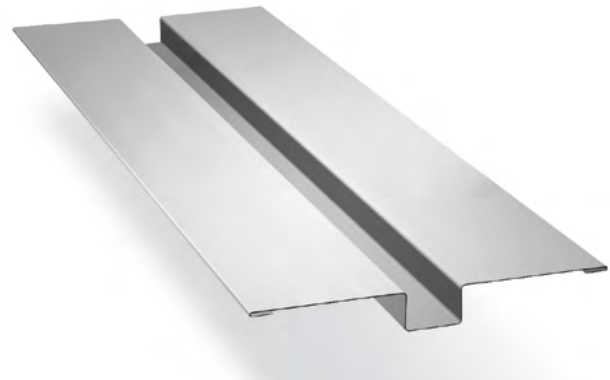
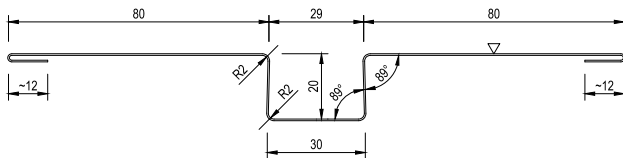
¹ a maximum length up to 6000 mm

² weight calculated for sheet thickness 0.5 mm (flashings available also in thickness 0.6 mm)

Vertical flashing EA1B36

Applications:

- flashing for vertical joint
- all types of Ruukki wall panels in horizontal arrangement except panels with WEE mineral wool core
- installed to EA1B43 assembly flashing
- can be installed with cover strip EA1B44



Symbol	Length ¹	Weight ²
	[mm]	[kg]
EA1B36A3000	3000	3.000

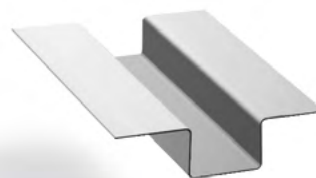
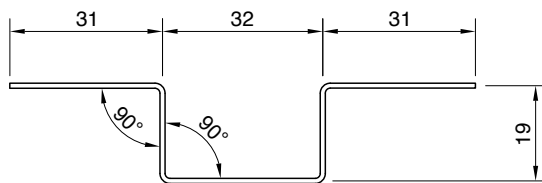
¹ a maximum length up to 6000 mm

² weight calculated for sheet thickness 0.5 mm (flashings available also in thickness 0.6 mm)

Assembly flashing EA1B43

Applications:

- * bottom element for installation of EA1B35 and EA1B36 joint flashings



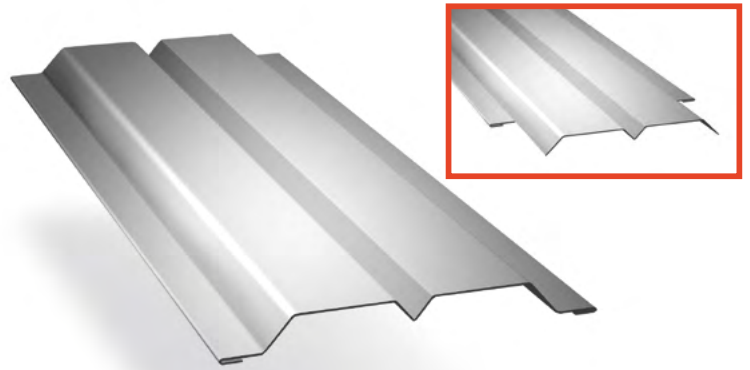
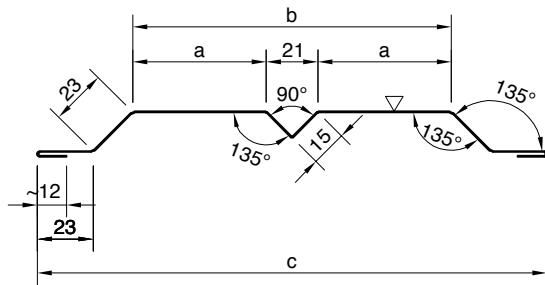
Symbol	Length (L)	Weight ¹
	[mm]	[kg]
EA1B43A100	100	0.106

¹ weight calculated for sheet thickness 1.0 mm
Material: galvanized steel plate

**Joint flashing
EA1B23**

Applications:

- flashing for vertical joint
- Ruukki wall panels in horizontal arrangement,
- flashing can be made with edges cut maximally at 100 mm length



Symbol	a	b	c	Length ¹	Weight
	[mm]	[mm]	[mm]	[mm]	[kg]
EA1B23A3000 ⁴	55	131	210	3000	3.072 ²
EA1B23A3400 ⁴	55	131	210	3400	4.178 ³
EA1B23B3000	80	181	260	3000	3.672 ²
EA1B23B3400	80	181	260	3400	4.994 ³

¹ a maximum length up to 6000 mm

² weight calculated for sheet thickness 0.5 mm (flashings available also in thickness 0.6 mm)

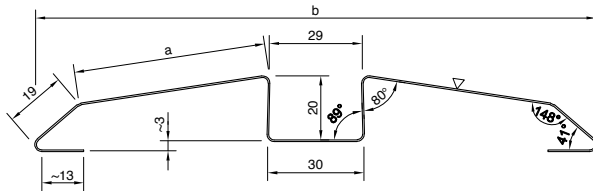
³ weight calculated for sheet thickness 0.6 mm (flashings available also in thickness 0.5 mm)

⁴ application: Ruukki wall panels except panels with WEE core

Joint flashing EA1B40

Applications:

- flashing for vertical joint
- all types of Ruukki wall panels in horizontal arrangement
- installed to EA1B41 assembly flashing
- can be installed with cover strip EA1B44



Symbol	a	b	Length ¹	Weight ²
	[mm]	[mm]	[mm]	[kg]
EA1B40A3000 ³	60	175	3000	3.024
EA1B40B3000	95	245	3000	3.888

¹ a maximum length up to 6000 mm

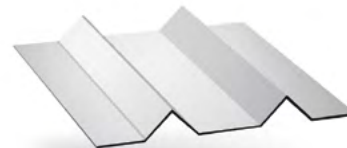
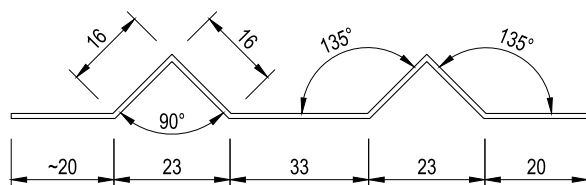
² weight calculated for sheet thickness 0.5 mm (flashings available also in thickness 0.6 mm)

³ application: Ruukki wall panels except panels with WEE core

Assembly flashing EA1B41

Applications:

- assembly element of EA1B40 joint flashing



Symbol	Length	Weight ¹
	[mm]	[kg]
EA1B41A100	100	0.106

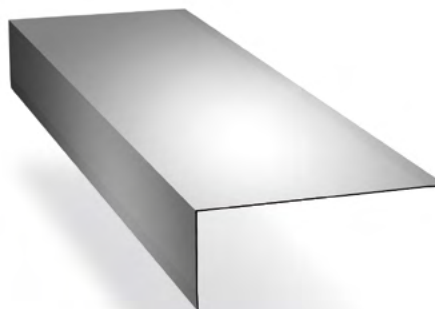
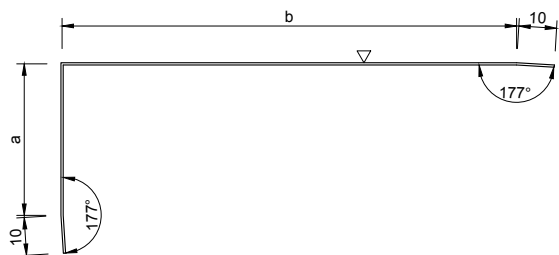
¹ weight calculated for sheet thickness 1.0 mm
Material: galvanized steel plate

External corner flashing

EA1EC9

Applications:

- external wall corner
- all types of Ruukki wall panels

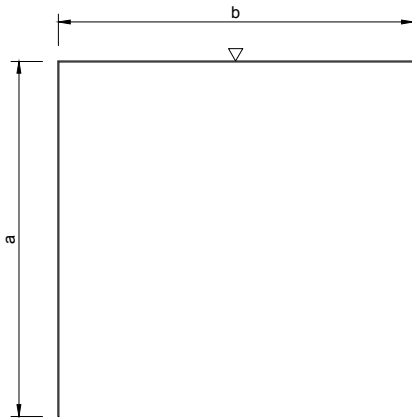


Symbol	a	b	Length ¹	Weight ²	Panel thickness
	[mm]	[mm]	[mm]	[kg]	[mm]
EA1EC9-40	40	80	3350	2.235	40
EA1EC9-60	40	100	3350	2.557	60
EA1EC9-80	40	120	3350	2.878	80
EA1EC9-100	40	140	3350	3.200	100
EA1EC9-110	40	150	3350	3.361	110
EA1EC9-120	40	160	3350	3.522	120
EA1EC9-140	40	180	3350	3.843	140
EA1EC9-150	40	190	3350	4.004	150
EA1EC9-160	40	200	3350	4.165	160
EA1EC9-170	40	210	3350	4.326	170
EA1EC9-180	40	220	3350	4.486	180
EA1EC9-200	40	240	3350	4.808	200
EA1EC9-230	40	270	3350	5.290	230

¹ a maximum length up to 6000 mm

² weight calculated for sheet thickness 0.6 mm

External corner flashing

EA1EC10

Applications:

- external wall corner
- all types of Ruukki wall panels



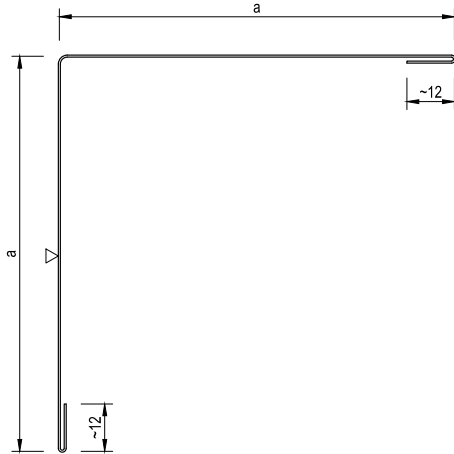
Symbol	a	b	Length ¹	Weight ²	Panel thickness
	[mm]	[mm]	[mm]	[kg]	[mm]
EA1EC10-40	80	80	3350	2.557	40
EA1EC10-60	100	100	3350	3.200	60
EA1EC10-80	120	120	3350	3.843	80
EA1EC10-100	140	140	3350	4.486	100
EA1EC10-110	150	150	3350	4.808	110
EA1EC10-120	160	160	3350	5.130	120
EA1EC10-140	180	180	3350	5.773	140
EA1EC10-150	190	190	3350	6.094	150
EA1EC10-160	200	200	3350	6.416	160
EA1EC10-170	210	210	3350	6.738	170
EA1EC10-180	220	220	3350	7.059	180
EA1EC10-200	240	240	3350	7.702	200
EA1EC10-230	270	270	3350	8.667	230

¹ a maximum length up to 6000 mm² weight calculated for sheet thickness 0.6 mm

Corner flashing
EA1B03

Applications:

- external wall corner
- all types of Ruukki wall panels



Symbol	a	Length ¹	Weight ²	Panel thickness
	[mm]	[mm]	[kg]	[mm]
EA1B03M3000	80	3000	2.196	40
EA1B03A3000	100	3000	2.676	60
EA1B03G3000	120	3000	3.156	80
EA1B03B3000	140	3000	3.636	100
EA1B03N3000	150	3000	3.876	110
EA1B03C3000	160	3000	4.116	120
EA1B03D3000	180	3000	4.596	140
EA1B03J3000	190	3000	4.836	150
EA1B03H3000	200	3000	5.076	160
EA1B03K3000	210	3000	5.316	170
EA1B03I3000	220	3000	5.556	180
EA1B03E3000	240	3000	6.036	200
EA1B03L3000	270	3000	6.756	230

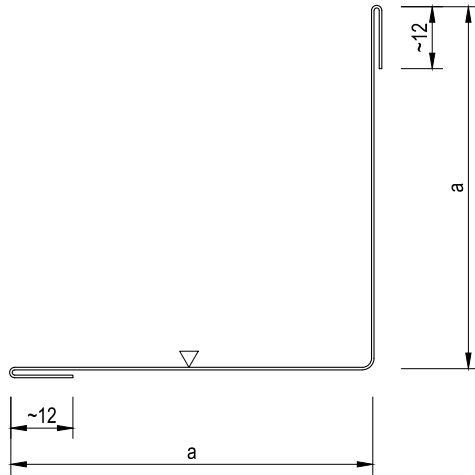
¹ a maximum length up to 6000 mm

² weight calculated for sheet thickness 0.5 mm (flashings available also in thickness 0.6 mm)

Corner flashing EA1B05

Applications:

- internal wall corner
- all types of Ruukki wall panels



Symbol	a	Length ¹	Weight ²
	[mm]	[mm]	[kg]
EA1B05B3000	40	3000	1.236
EA1B05A3000	70	3000	1.956

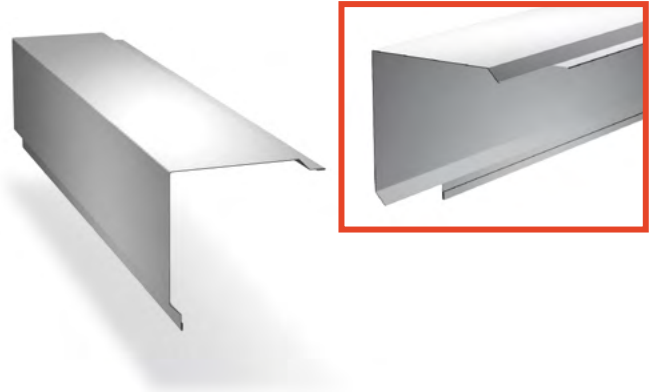
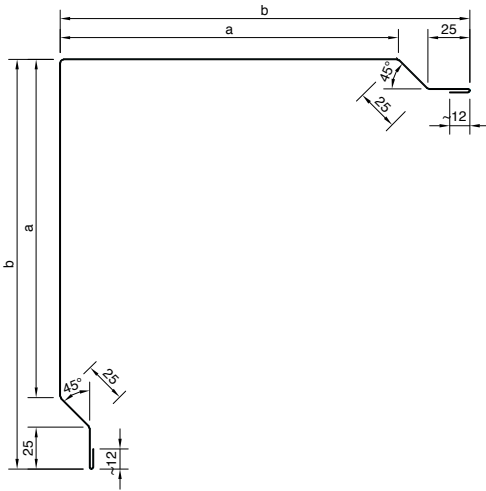
¹ a maximum length up to 6000 mm

² weight calculated for sheet thickness 0.5 mm (flashings available also in thickness 0.6 mm)

Corner flashing
EA1B28

Applications:

- wall angle flashing (outside)
- flashing can be made with edges cut maximally at 100 mm length



Symbol	a	b	Length ¹	Weight	Panel thickness	Panel thickness WEE core
	[mm]	[mm]				
EA1B28F3000	148	~185	3000	5.028 ²	40	-
EA1B28K3000	162	~205	3000	5.364 ²	60	-
EA1B28G3000	180	~225	3000	5.796 ²	80	-
EA1B28A3000	202	~245	3000	6.324 ²	100	-
EA1B28O3000	212	~255	3000	6.564 ²	110	-
EA1B28B3000	222	~265	3000	6.804 ²	120	-
EA1B28C3000	242	~285	3000	7.284 ²	140	-
EA1B28L3000	252	~295	3000	7.524 ²	150	-
EA1B28I3000	262	~305	3000	7.764 ²	160	-
EA1B28M3000	272	~315	3000	8.004 ²	170	-
EA1B28J3000	282	~325	3000	8.244 ²	180	160
EA1B28D3000	302	~345	3000	8.724 ²	200	170, 180
EA1B28E3000	332	~375	3000	9.444 ²	230	200
EA1B28N3000	352	~395	3000	9.924 ²	(250)	230
EA1B28F3400	148	~185	3400	6.838 ³	40	-
EA1B28K3400	162	~205	3400	7.295 ³	60	-
EA1B28G3400	180	~225	3400	7.883 ³	80	-
EA1B28A3400	202	~245	3400	8.601 ³	100	-
EA1B28O3400	212	~255	3400	8.927 ³	110	-
EA1B28B3400	222	~265	3400	9.253 ³	120	-
EA1B28C3400	242	~285	3400	9.906 ³	140	-
EA1B28L3400	252	~295	3400	10.233 ³	150	-
EA1B28I3400	262	~305	3400	10.559 ³	160	-
EA1B28M3400	272	~315	3400	10.885 ³	170	-
EA1B28J3400	282	~325	3400	11.212 ³	180	160
EA1B28D3400	302	~345	3400	11.865 ³	200	170, 180
EA1B28E3400	332	~375	3400	12.844 ³	230	200
EA1B28N3400	352	~395	3400	13.497 ³	(250)	230

¹ a maximum length up to 6000 mm

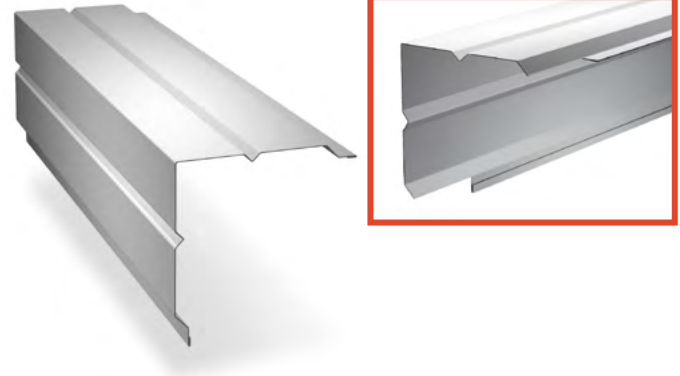
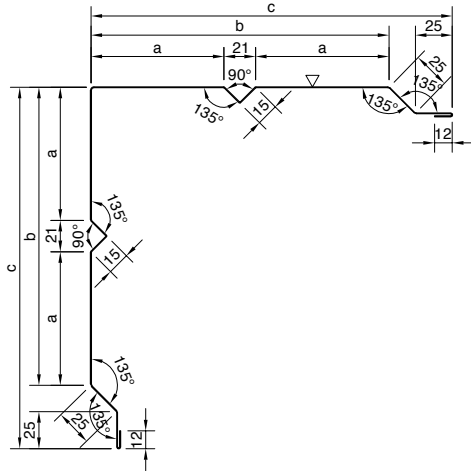
² weight calculated for sheet thickness 0.5 mm (flashings available also in thickness 0.6 mm)

³ weight calculated for sheet thickness 0.6 mm (flashings available also in thickness 0.5 mm)

Corner flashing EA1B45

Applications:

- wall angle flashing (outside)
- flashing can be made with edges cut maximally at 100 mm length



Symbol	a	b	c	Length ¹	Weight	Panel thickness	Panel thickness WEE core
	[mm]	[mm]	[mm]	[mm]	[kg]	[mm]	[mm]
EA1B45A3000	60	~141	~184	3000	5.052 ²	40	-
EA1B45B3000	70	~161	~204	3000	5.532 ²	60	-
EA1B45C3000	80	~181	~224	3000	6.012 ²	80	-
EA1B45D3000	90	~201	~244	3000	6.492 ²	100	-
EA1B45N3000	95	~211	~254	3000	6.732 ²	110	-
EA1B45E3000	100	~221	~264	3000	6.972 ²	120	-
EA1B45F3000	110	~241	~284	3000	7.452 ²	140	-
EA1B45G3000	115	~251	~294	3000	7.692 ²	150	-
EA1B45H3000	120	~261	~304	3000	7.932 ²	160	-
EA1B45I3000	125	~271	~314	3000	8.172 ²	170	-
EA1B45J3000	130	~281	~324	3000	8.412 ²	180	160
EA1B45K3000	140	~301	~344	3000	8.892 ²	200	170, 180
EA1B45L3000	155	~331	~374	3000	9.612 ²	230	200
EA1B45M3000	165	~351	~394	3000	10.092 ²	-	230
EA1B45A3400	60	~141	~184	3400	6.871 ³	40	-
EA1B45B3400	70	~161	~204	3400	7.524 ³	60	-
EA1B45C3400	80	~181	~224	3400	8.176 ³	80	-
EA1B45D3400	90	~201	~244	3400	8.829 ³	100	-
EA1B45D3000	95	~211	~252	3400	9.156 ³	110	-
EA1B45E3400	100	~221	~264	3400	9.482 ³	120	-
EA1B45F3400	110	~241	~284	3400	10.135 ³	140	-
EA1B45G3400	115	~251	~294	3400	10.461 ³	150	-
EA1B45H3400	120	~261	~304	3400	10.788 ³	160	-
EA1B45I3400	125	~271	~314	3400	11.114 ³	170	-
EA1B45J3400	130	~281	~324	3400	11.440 ³	180	160
EA1B45K3400	140	~301	~344	3400	12.093 ³	200	170, 180
EA1B45L3400	155	~331	~374	3400	13.072 ³	230	200
EA1B45M3400	165	~351	~394	3400	13.725 ³	-	230

¹ a maximum length up to 6000 mm

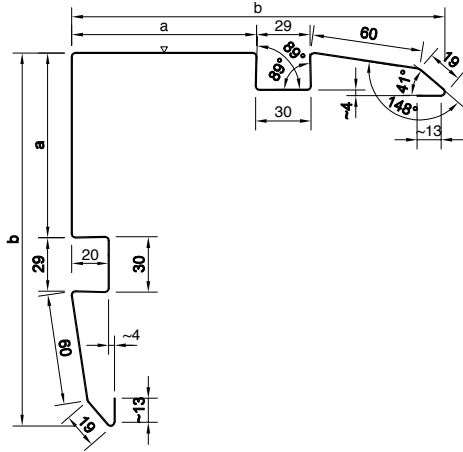
² weight calculated for sheet thickness 0.5 mm (flashings available also in thickness 0.6 mm)

³ weight calculated for sheet thickness 0.6 mm (flashings available also in thickness 0.5 mm)

Corner flashing
EA1B42

Applications:

- external wall corner
- all types of Ruukki wall panels
- can be installed with cover strip EA1B44

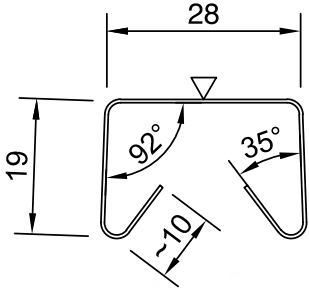


Symbol	a	b	Length ¹	Weight ²	Panel thickness
	[mm]	[mm]	[mm]	[kg]	[mm]
EA1B42A3000	100	~202	3000	6.204	60
EA1B42B3000	120	~222	3000	6.684	80
EA1B42C3000	140	~242	3000	7.164	100
EA1B42M3000	150	~252	3000	7.404	110
EA1B42D3000	160	~262	3000	7.644	120
EA1B42E3000	180	~282	3000	8.124	140
EA1B42J3000	190	~292	3000	8.364	150
EA1B42H3000	200	~302	3000	8.604	160
EA1B42K3000	210	~312	3000	8.844	170
EA1B42I3000	220	~322	3000	9.084	180
EA1B42F3000	240	~342	3000	9.564	200
EA1B42L3000	270	~372	3000	10.284	230

¹ a maximum length up to 6000 mm

² weight calculated for sheet thickness 0.5 mm (flashings available also in thickness 0.6 mm)

Cover strip
EA1B44



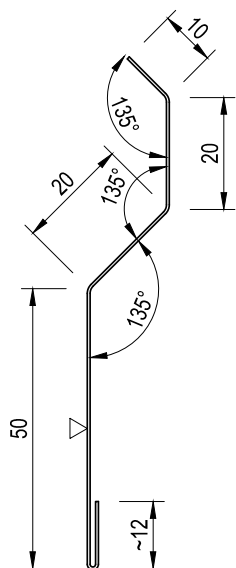
- Applications:
- strip covers fasteners
 - element installed on flashings EA1B35, EA1B36, EA1B40 and EA1B42



Symbol	Length ¹	Weight ²
	[mm]	[kg]
EA1B44A3000	3000	1.008

¹ a maximum length up to 6000 mm
² weight calculated for sheet thickness 0.5 mm (flashings available also in thickness 0.6 mm)

Drip wall flashing
EA1B22



Applications:

- wall drip
- all types of Ruukki wall panels

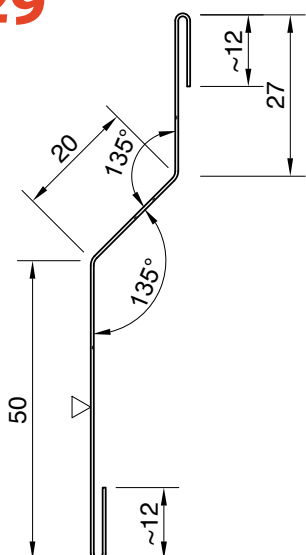


Symbol	Length ¹	Weight ²
	[mm]	[kg]
EA1B22A3000	3000	1.344

¹ a maximum length up to 6000 mm

² weight calculated for sheet thickness 0.5 mm (flashings available also in thickness 0.6 mm)

Wall opening flashing
EA1B29



Applications:

- wall drip
- all types of Ruukki wall panels

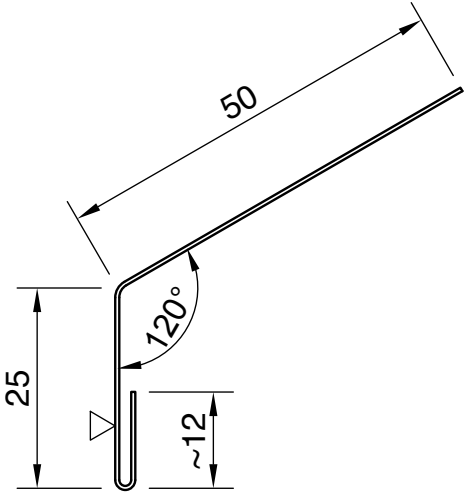


Symbol	Length ¹	Weight ²
	[mm]	[kg]
EA1B29A3000	3000	1.452

¹ a maximum length up to 6000 mm

² weight calculated for sheet thickness 0.5 mm (flashings available also in thickness 0.6 mm)

Drip wall flashing
EA1B32



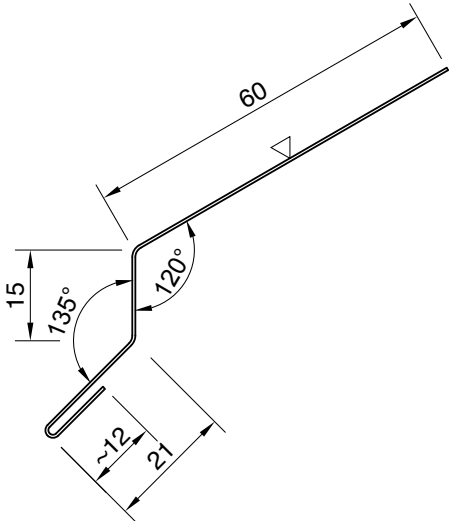
- Applications:
- drip for joint between panels in vertical arrangement
 - SP2D PIR and SP2D W/WE Ruukki panels



Symbol	Length ¹	Weight ²
	[mm]	[kg]
EA1B32A120	120	0.042

¹ a maximum length up to 6000 mm
² weight calculated for sheet thickness 0.5 mm (flashings available also in thickness 0.6 mm)

Drip wall flashing
EA1B33



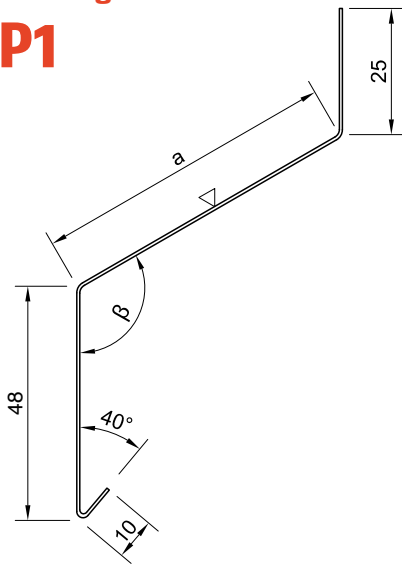
- Applications:
- drip for joint between panels in vertical arrangement
 - SP2D PIR and SP2D W/WE Ruukki panels



Symbol	Length ¹	Weight ²
	[mm]	[kg]
EA1B33A120	120	0.052

¹ a maximum length up to 6000 mm
² weight calculated for sheet thickness 0.5 mm (flashings available also in thickness 0.6 mm)

Plinth flashing
EA1P1



Applications:

- wall drip
- Ruukki wall panels with visible fixing



Symbol	a	β	Length ¹
	[mm]	[°]	[mm]
EA1P1	*	**	3350

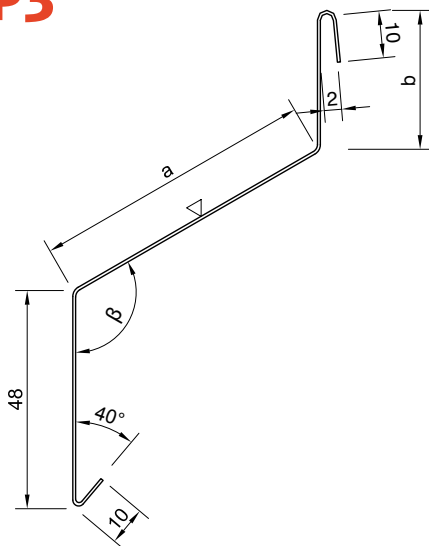
* a dimension should be given in order

** It is required to specify β angle in the order (depending on a roof inclination)

¹ a maximum length up to 6000 mm

Material: sheet thickness 0.6 mm

Plinth flashing
EA1P3



Applications:

- wall drip
- Ruukki wall panels with visible fixing



Symbol	a	b	β	Length ¹
	[mm]	[mm]	[°]	[mm]
EA1P3	*	*	**	3350

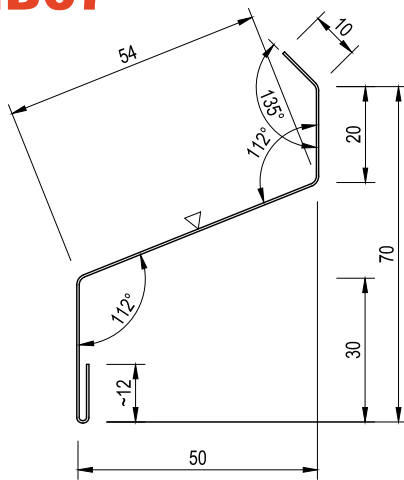
* a and b dimensions should be given in order

** It is required to specify β angle in the order (depending on a roof inclination)

¹ a maximum length up to 6000 mm

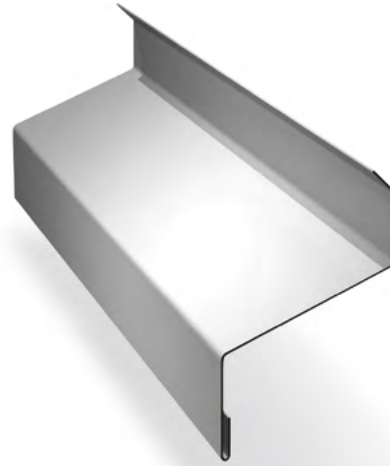
Material: sheet thickness 0.6 mm

Drip wall flashing EA1B07



Applications:

- wall drip above windows
- all types of Ruukki wall panels

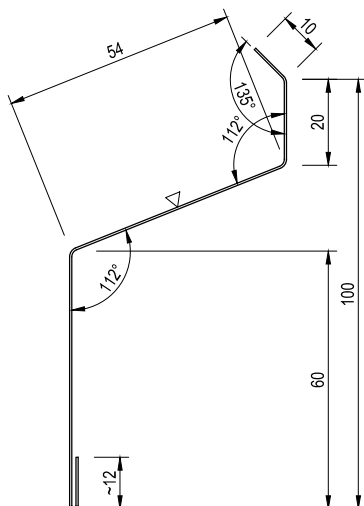


Symbol	Length ¹	Weight ²
	[mm]	[kg]
EA1B07B1240	1240	0.625
EA1B07D3000	3000	1.512

¹ a maximum length up to 6000 mm

² weight calculated for sheet thickness 0.5 mm (flashings available also in thickness 0.6 mm)

Drip wall flashing EA1B08



Applications:

- wall drip above wall openings
- all types of Ruukki wall panels



Symbol	Length ¹	Weight ²
	[mm]	[kg]
EA1B08B1240	1240	0.774
EA1B08D3000	3000	1.872

¹ a maximum length up to 6000 mm

² weight calculated for sheet thickness 0.5 mm (flashings available also in thickness 0.6 mm)

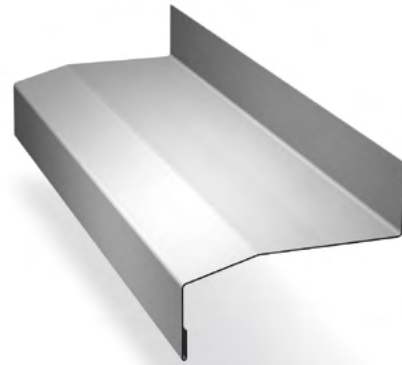
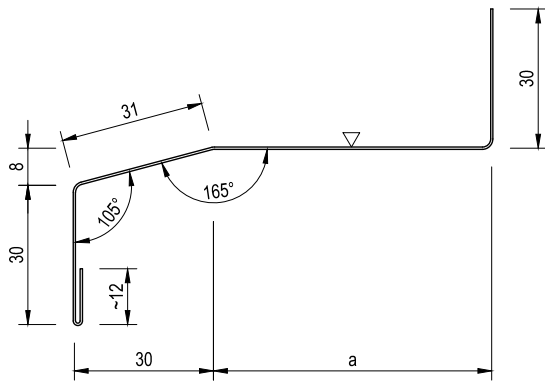
1.4. Plinth flashing

Plinth flashing

EA1B01

Applications:

- socle drip – joint between wall and ground beam for Ruukki wall panels
- Ruukki SP2B, SP2D, SPB panels in vertical application
- drip above window in Ruukki SP2D PIR and SP2D W/WE

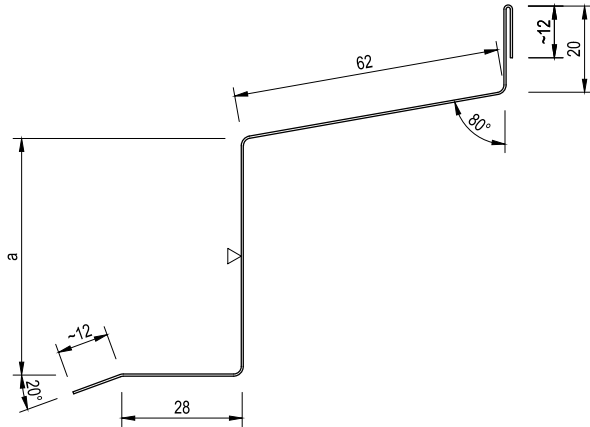


Symbol	a	Length ¹	Weight ²	Panel thickness
	[mm]	[mm]	[kg]	[mm]
EA1B01A3000	20	3000	1.464	40
EA1B01B3000	40	3000	1.704	60
EA1B01C3000	60	3000	1.944	80
EA1B01D3000	80	3000	2.184	100
EA1B01S3000	90	3000	2.304	110
EA1B01E3000	100	3000	2.424	120
EA1B01F3000	120	3000	2.664	140
EA1B01O3000	130	3000	2.784	150
EA1B01J3000	140	3000	2.904	160
EA1B01P3000	150	3000	3.024	170
EA1B01K3000	160	3000	3.144	180
EA1B01G3000	180	3000	3.384	200
EA1B01R3000	210	3000	3.744	230

¹ a maximum length up to 6000 mm

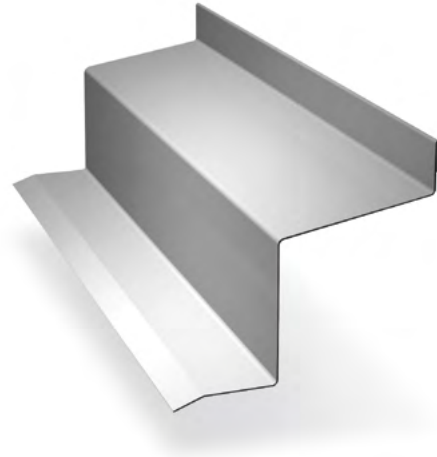
² weight calculated for sheet thickness 0.5 mm (flashings available also in thickness 0.6 mm)

Plinth flashing EA1B02



Applications:

- internal flashing – joint between wall and ground beam
- all types of Ruukki wall panels



Symbol	a	Length ¹	Weight ²
	[mm]	[mm]	[kg]
EA1B02A3000	55	3000	2.256
EA1B02B3000	95	3000	2.736

¹ a maximum length up to 6000 mm

² weight calculated for sheet thickness 0.5 mm (flashings available also in thickness 0.6 mm)

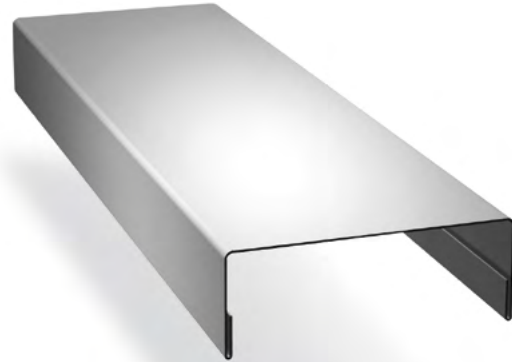
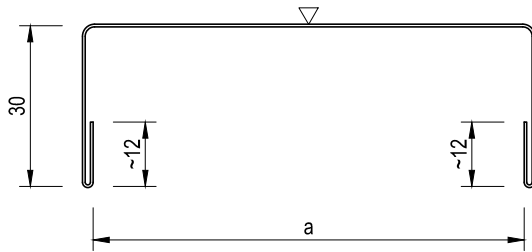
1.5. Opening flashings

Wall opening flashing

EA1B15

Applications:

- flashing for wall openings
- all types of Ruukki wall panels



Symbol	a	Length ¹	Weight ²
	[mm]	[mm]	[kg]
EA1B15A3000	40	3000	1.512
EA1B15B3000	60	3000	1.752
EA1B15D3000	80	3000	1.992
EA1B15E3000	100	3000	2.232
EA1B15O3000	110	3000	2.352
EA1B15F3000	120	3000	2.472
EA1B15G3000	140	3000	2.712
EA1B15H3000	150	3000	2.832
EA1B15K3000	160	3000	2.952
EA1B15M3000	170	3000	3.072
EA1B15L3000	180	3000	3.192
EA1B15I3000	200	3000	3.432
EA1B15N3000	230	3000	3.792

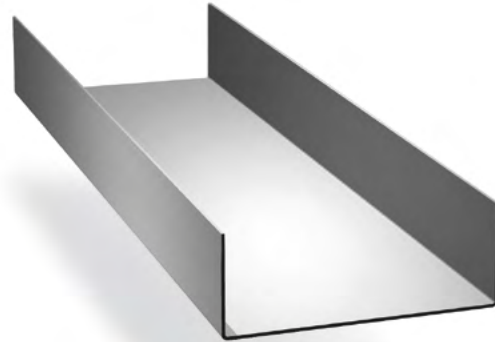
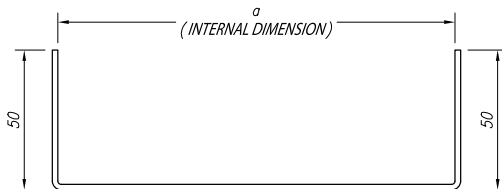
¹ a maximum length up to 6000 mm

² weight calculated for sheet thickness 0.5 mm (flashings available also in thickness 0.6 mm)

Door frame stud EA1D

Applications:

- flashing for door openings
- all types of Ruukki wall panels



Symbol	a	Length	Weight ¹	Panel thickness
	[mm]	[mm]	[kg]	[mm]
EA1D60	62	2500	6.280	60
EA1D80	82	2500	7.080	80
EA1D100	102	2500	7.880	100
EA1D110	112	2500	8.320	110
EA1D120	122	2500	8.680	120
EA1D140	142	2500	9.480	140
EA1D150	152	2500	9.880	150
EA1D160	162	2500	10.280	160
EA1D170	172	2500	10.680	170
EA1D180	182	2500	11.080	180
EA1D200	202	2500	11.880	200
EA1D230	232	2500	13.080	230

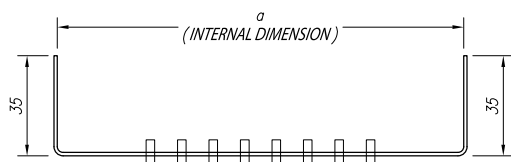
¹ weight calculated for sheet thickness 2.0 mm
Material: galvanized steel plate

Window frame stud

EA1W

Application:

- perforated element for vertically installed Ruukki panels and also for horizontal application when panel end is cut-off
- cover and support stud for window edges
- all types of Ruukki wall panels
- perforated to reduce the thermal bridge



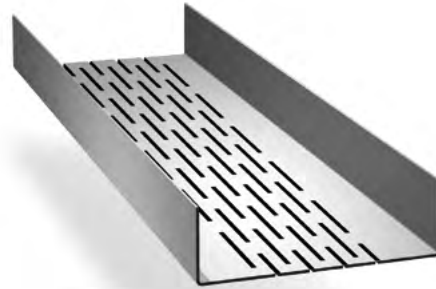
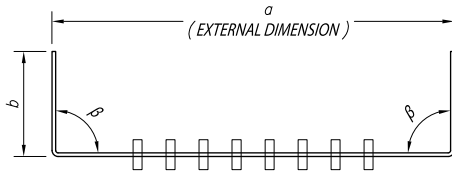
Symbol	a	Length	Weight ¹	Perforation	Panel thickness
	[mm]	[mm]	[kg]	[rows of holes]	[mm]
EA1W40	42	3000	3.210	3	40
EA1W60	62	3000	3.810	3	60
EA1W80	82	3000	4.410	3	80
EA1W100	102	3000	5.010	6	100
EA1W110	112	3000	5.310	6	110
EA1W120	122	3000	5.610	6	120
EA1W140	142	3000	6.210	8	140
EA1W150	152	3000	6.510	8	150
EA1W160	162	3000	6.810	8	160
EA1W170	172	3000	7.110	8	170
EA1W180	182	3000	7.410	8	180
EA1W200	202	3000	8.010	8	200
EA1W230	232	3000	8.910	8	230

¹ weight calculated for sheet thickness 1.25 mm
Material: galvanized steel plate

Plinth track EA1U

Applications:

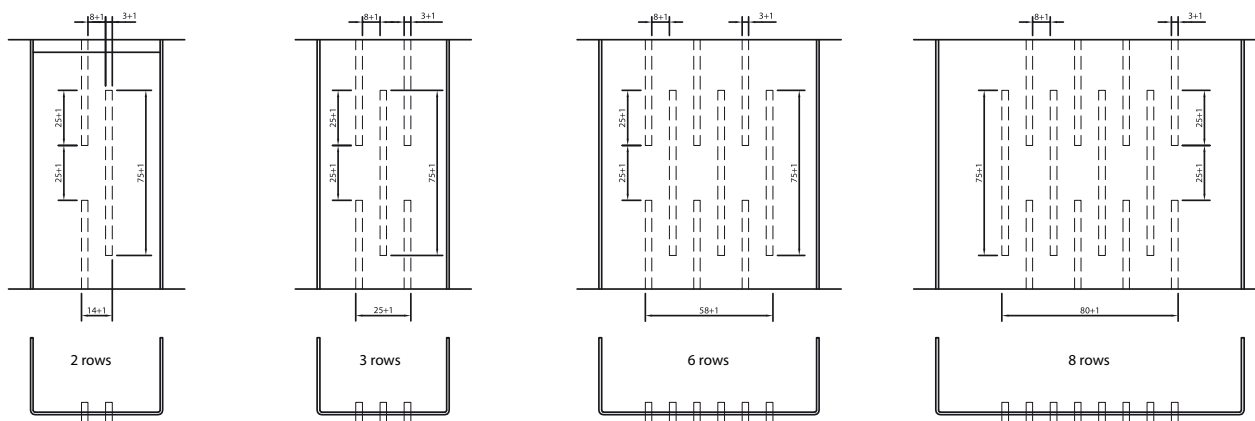
- starting element for horizontally installed Ruukki panels
- Ruukki wall panels according to a table below
- perforated to reduce the thermal bridge



Symbol	a	b	Length	Weight ¹	Perforation
	[mm]	[mm]			
EA1U3035353000	30	35	3000	2.850	2
EA1U4035353000	40	35	3000	3.150	3
EA1U5035353000	50	35	3000	3.450	3
EA1U6035353000	60	35	3000	3.750	3
EA1U7035353000	70	35	3000	4.050	6
EA1U8035353000	80	35	3000	4.350	6
EA1U9035353000	90	35	3000	4.650	6
EA1U10035353000	100	35	3000	4.950	6
EA1U12035353000	120	35	3000	5.550	8
EA1U13035353000	130	35	3000	5.850	8
EA1U14035353000	140	35	3000	6.150	8
EA1U15035353000	150	35	3000	6.450	8
EA1U16035353000	160	35	3000	6.750	8
EA1U18035353000	180	35	3000	7.350	8
EA1U21035353000	210	35	3000	8.250	8
EA1U23035353000	230	35	3000	3.850	8

¹ weight calculated for sheet thickness 1.25 mm
Material: galvanized steel plate

Dimensions of particular perforation system:

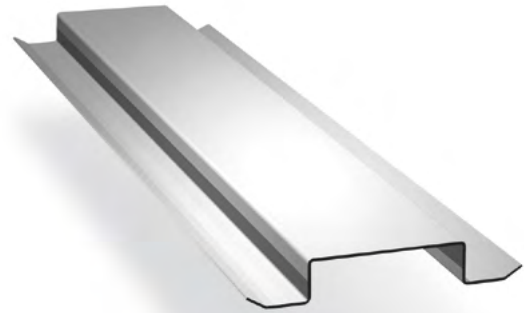
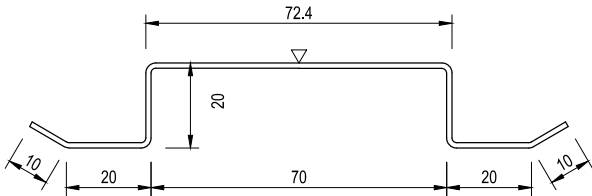


Panel type	Symbol of flashing														
	EA1U30	EA1U40	EA1U50	EA1U60	EA1U70	EA1U80	EA1U90	EA1U100	EA1U120	EA1U130	EA1U140	EA1U150	EA1U160	EA1U180	EA1U210
Ruukki SP2B60 PIR		•													
Ruukki SP2B80 PIR				•											
Ruukki SP2B100 PIR (ENERGY)						•									
Ruukki SP2B110 PIR (ENERGY)							•								
Ruukki SP2D60 PIR	•														
Ruukki SP2D80 PIR			•												
Ruukki SP2D100 PIR (ENERGY)					•										
Ruukki SP2D120 PIR (ENERGY)							•								
Ruukki SP2E120 PIR (ENERGY)								•							
Ruukki SP2E140 PIR (ENERGY)									•						
Ruukki SP2E160 PIR (ENERGY)										•					
Ruukki SP2E180 PIR (ENERGY)											•				
Ruukki SP2E200 PIR (ENERGY)												•			
Ruukki SPB80 MW				•											
Ruukki SPB100 MW						•									
Ruukki SPB120 MW							•								
Ruukki SPB140 MW								•							
Ruukki SPB150 MW									•						
Ruukki SPB160 MW (ENERGY)										•					
Ruukki SPB170 MW (ENERGY)											•				
Ruukki SPB180 MW (ENERGY)												•			
Ruukki SPB200 MW (ENERGY)													•		
Ruukki SPB230 MW (ENERGY)														•	
Ruukki SP2D100 MW						•									
Ruukki SP2D120 MW							•								
Ruukki SP2D140 MW								•							
Ruukki SP2D150 MW									•						
Ruukki SP2D160 MW (ENERGY)										•					
Ruukki SP2D170 MW (ENERGY)											•				
Ruukki SP2D180 MW (ENERGY)												•			
Ruukki SP2D200 MW (ENERGY)													•		
Ruukki SP2D230 MW (ENERGY)														•	

1.6. Support studs

Support stud CA1SS1

- Applications:
- support stud
 - Ruukki facade products



Symbol	Length ¹	Weight ²
	[mm]	[kg/rm]
CA1SS1	100-4500	1.720

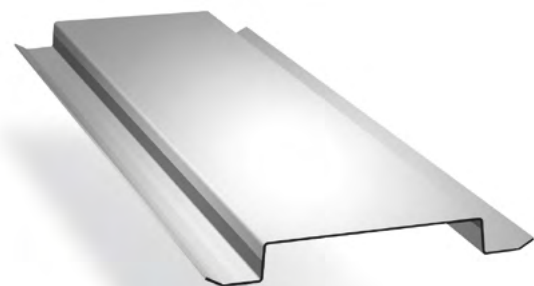
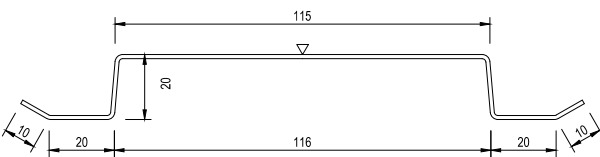
¹ a maximum length up to 6000 mm

² weight calculated for sheet thickness 1.25 mm and length 1.0 rm

Material: galvanized steel plate

Support stud CA1SS2

- Applications:
- support stud
 - Ruukki facade products



Symbol	Length ¹	Weight ²
	[mm]	[kg/rm]
CA1SS2	100-4000	2.150

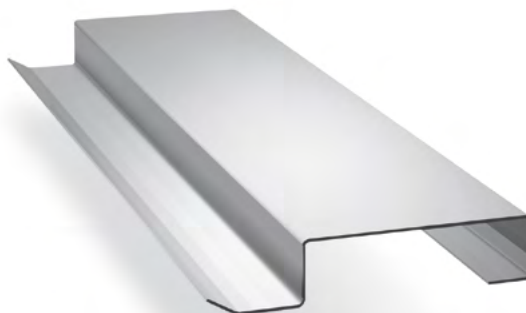
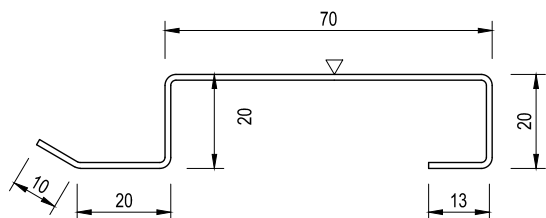
¹ a maximum length up to 6000 mm

² weight calculated for sheet thickness 1.25 mm and length 1.0 rm

Material: galvanized steel plate

Support stud
CA1RS

Applications:
 • support stud
 • Ruukki facade products

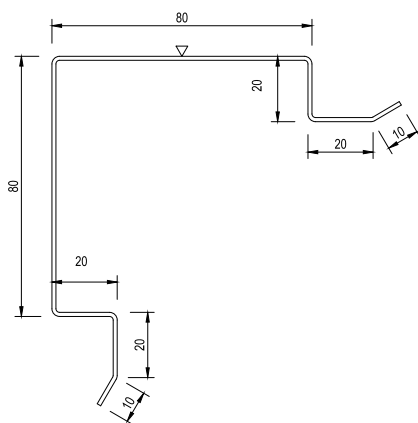


Symbol	Length ¹	Weight ²
	[mm]	[kg/rm]
CA1RS	100-4000	1.500

¹ a maximum length up to 6000 mm
² weight calculated for sheet thickness 1.25 mm and length 1.0 rm
 Material: galvanized steel plate

Support stud corner
CA1SSC1

Applications:
 • support stud
 • Ruukki facade products



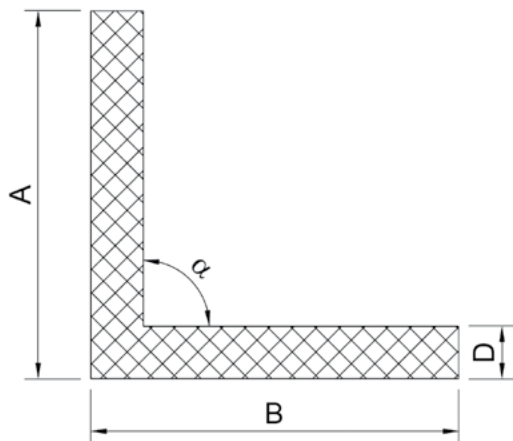
Symbol	Length ¹	Weight ²
	[mm]	[kg/rm]
CA1SSC1	100-4000	2.500

¹ a maximum length up to 6000 mm
² weight calculated for sheet thickness 1.25 mm and length 1.0 rm
 Material: galvanized steel plate

1.7. Design Panels

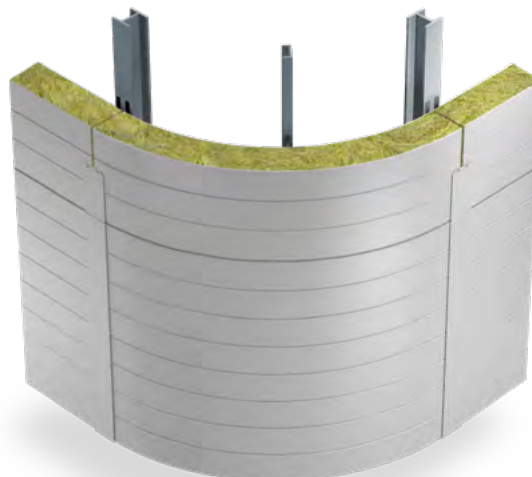
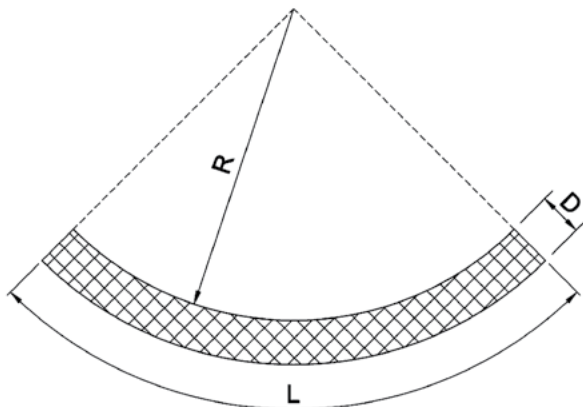
Panel thickness	Core type	Design Panel DP - Symbol			
		DP H1	DP H3	DP V3	DP V4
60	PIR	SP2B, SP2D	-	-	SP2B
80		SP2B, SP2D	SP2B, SP2D	SP2B, SP2D	SP2B
100		SP2B, SP2D	SP2B, SP2D	SP2B, SP2D	SP2B
110		SP2B	SP2B	SP2B	SP2B
120		SP2D, SP2E	SP2D, SP2E	SP2D, SP2E	SP2E
140		SP2E	SP2E	SP2E	SP2E
160		SP2E	SP2E	-	SP2E
80		MW	SPB, SP2D	SPB, SP2D	SPB
100	SPB, SP2D		SPB, SP2D	SPB, SP2D	SPB
120	SPB, SP2D		SPB, SP2D	SPB, SP2D	SPB
140	SPB, SP2D		SPB, SP2D	SPB, SP2D	SPB
150	SPB, SP2D		SPB, SP2D	SPB, SP2D	SPB
160	SPB, SP2D		SPB, SP2D	-	SPB
170	SPB, SP2D		SPB, SP2D	-	-
180	SPB, SP2D		SPB, SP2D	-	-
200	SPB, SP2D		SPB, SP2D	-	-
230	SPB, SP2D		-	-	-

Design Panel - horizontal DP H1



Panel thickness	Dimension A, B min.	Dimension A, B max.	Dimension A / B max.	α
[mm]	[mm]	[mm]	[mm]	
60, 80, 100, 110	180	700	700 / 700	90°-170°
120, 140, 150, 160, 170	230	700	700 / 700	90°-170°
180, 200	260	650	650 / 650	90°-170°
230	300	450	450 / 450	90°-170°

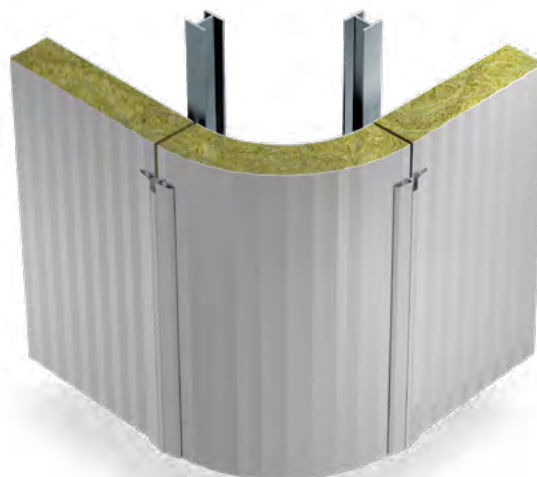
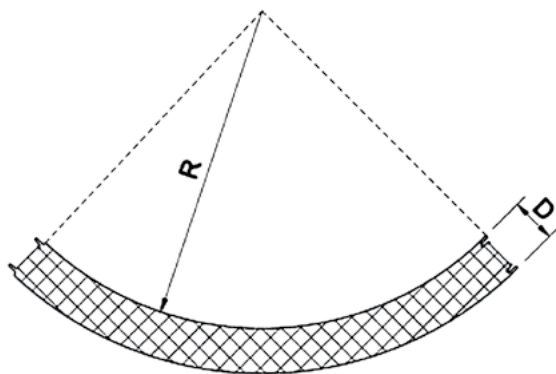
Design Panel - horizontal DP H3



Panel thickness D [mm]	Max length L [mm]	Min radius R [mm]
80, 100, 110, 120, 140	6000	2380
150, 160, 170, 180, 200	3000	2380

Flat F and linear L profilings are available for internal side of DP H3.

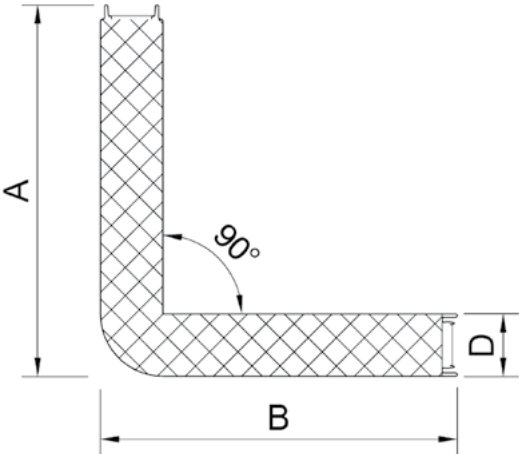
Design Panel - vertical DP V3



Panel thickness D [mm]	Max length L [mm]	Min radius R [mm]
80, 100, 110, 120, 140, 150	6000	800

Flat F and linear L profilings are available for internal side of DP H3.

Design Panel - vertical DP V4



Panel thickness D	Dimension A, B - modular width 1100	Dimension A, B - modular width 1000	Max length L
[mm]	[mm]	[mm]	[mm]
60	561	511	6000
80	566	516	6000
100	570	520	6000
110	572	522	6000
120	574	524	6000
140	579	529	6000
150	581	531	6000
160	583	533	6000

2. Fasteners

L01 and L02

Applications:

- fixing Ruukki panels to steel structure



• wall thickness: 4.0 ± 12.0 mm



• wall thickness: 2.0 ± 5.0 mm

Panel type	Panel thickness [mm]	Name	Name
PIR core			
SP2B PIR	40	L01A	L02A
	60	L01B	L02B
	80	L01C	L02C
	100	L01D	L02D
	110	L01H	L02H
SP2D PIR	60	L01A	L02A
	80	L01B	L02B
	100	L01C	L02C
	120	L01D	L02D
SP2E PIR	120	L01H	L02H
	140	L01E	L02E
	160	L01F	L02I
	180	L01F	L02F
	200	L01K	L02K
SP2C PIR	80/40	L01C	L02C
	80/40 (trough)	L01A	L02A
	100/60	L01D	L02D
	100/60 (trough)	L01B	L02B
	120/80	L01H	L02H
	120/80 (trough)	L01C	L02C
	140/100	L01E	L02E
	140/100 (trough)	L01D	L02D
	160/120	L01F	L02I
	160/120 (trough)	L01H	L02H
	190/150	L01J	L02F
	190/150 (trough)	L01I	L02I
	210/170	L01K	L02G
210/170 (trough)	L01F	L02F	
Mineral wool core (MW)			
SPB MW*	80	L01C	L02C
	100	L01D	L02D
	120	L01H	L02H
	140	L01E	L02E
	150	L01I	L02I
	160	L01F	L02I
	170	L01F	L02I
	180	L01F	L02F
	200	L01K	L02K
	230	L01G	L02G
	SP2D MW	100	L01C
120		L01D	L02D
140		L01H	L02H
150		L01E	L02E
160		L01E	L02E
170		L01I	L02I
180		L01F	L02I
200		L01K	L02F
230		L01G	L02G
SPC MW	140/100	L01E	L02E
	140/100 (trough)	L01D	L02D
	190/150	L01J	L02F
	190/150 (trough)	L01I	L02I

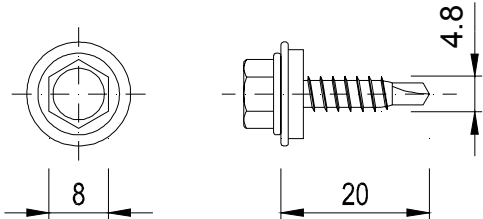
Notes:

For Ruukki SP2D MW panels use the additional L15 fastener

For Ruukki SP2D PIR panels use the additional L16 or L16 C/N fastener.

*does not apply to Ruukki SPB WEE panels (a required diameter of washer for SPB WEE is 29mm)

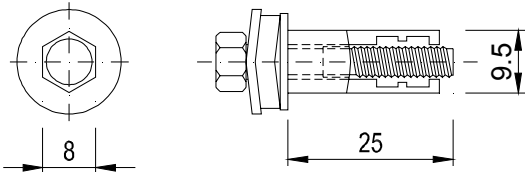
L03



Applications:
 • longitudinal fixing of Ruukki roof panels and flashings

Symbol	Weight
	[kg]
L03A	0.04

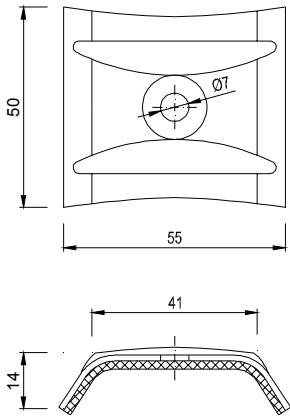
L07



Applications:
 • fixing skylight panels and PD roof supports to Ruukki roof panels

Symbol	Weight
	[kg]
L07	0.10

L06



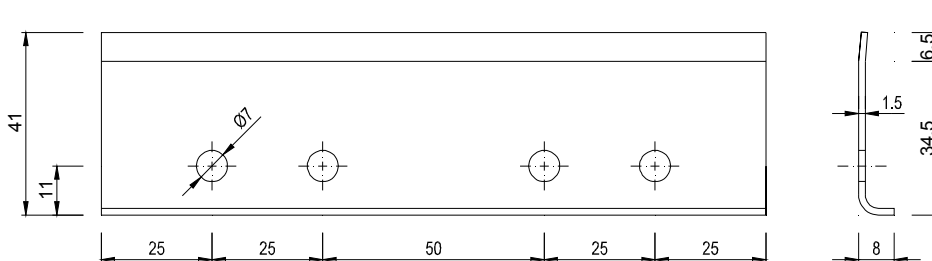
Applications:
 • washer fixing for Ruukki SP2C PIR and SPC W roof panels to steel structure
 • to be used together with L01 or L02 fasteners

Symbol	Weight
	[kg]
L06	0.10

L15

Applications:

- fixing SP2D W/WE Ruukki panels to steel structure
- to be used together with L01 or L02 fasteners

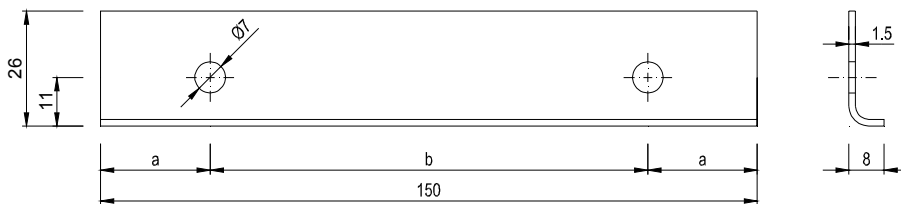


Symbol	SAP code	Weight
		[kg]
L15	EA1B60A15015	0.08

L16

Applications:

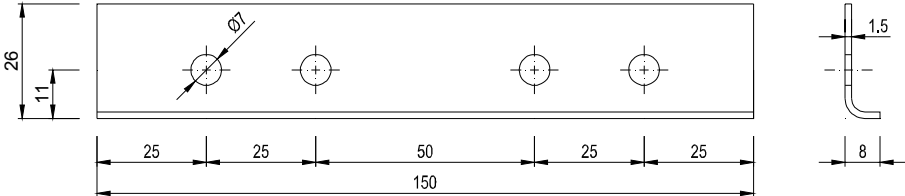
- fixing SP2D Ruukki panels to steel structure
- to be used together with L01 or L02 fasteners



Symbol	SAP code	a	b	Weight
		[mm]	[mm]	[kg]
L16A	EA1B61A15015	55	40	0.06
L16B	EA1B61B15015	35	80	0.06
L16C	EA1B61C15015	25	100	0.06

L16 C/N

- Applications:
- fixing SP2D E-PIR Ruukki panels to steel structure
 - to be used together with L01 or L02 fasteners

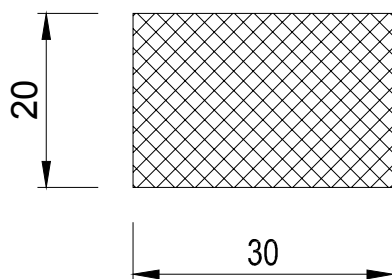


Symbol	SAP code	Weight
		[kg]
L16 C/N	EA1B61CN15015	0.06

3. Gaskets

20 x 30 Impregnated polyurethane gasket

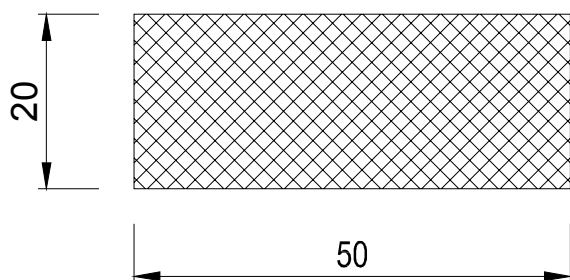
Applications:
 • sealing of Ruukki panel ends and openings



Width [mm]	Thickness [mm]
30	20

20 x 50 Impregnated polyurethane gasket

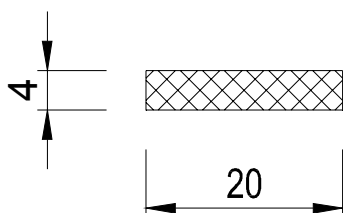
Applications:
 • sealing of Ruukki panel ends and openings
 • sealing of ridge



Width [mm]	Thickness [mm]
50	20

20 x 4 Self-adhesive polyethylene gasket

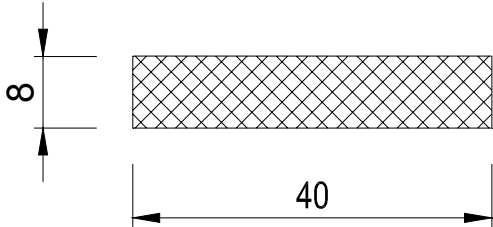
Applications:
 • a separator between Ruukki panel and steel concrete column
 • a separator between flashing and panel



Width [mm]	Thickness [mm]
20	4

8 x 40 Self-adhesive polyurethane gasket

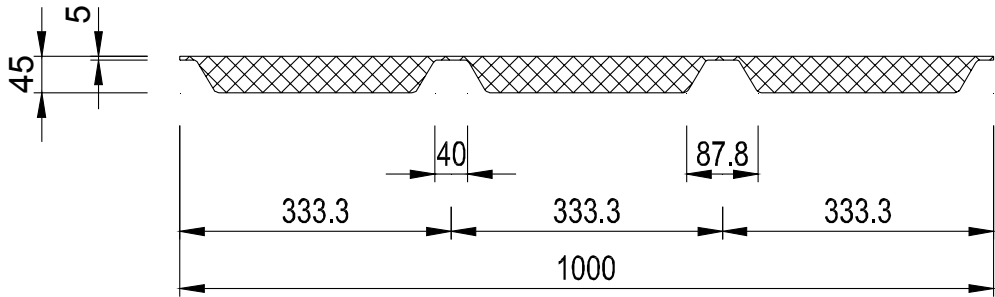
Applications:
 • a separator between Ruukki panel and plinth



Width [mm]	Thickness [mm]
40	8

U01

Applications:
 • sealing of ridge and roof finishing
 • Ruukki roof panels SP2C PIR and SPC W



Width [mm]	Thickness [mm]
1000	45

4. Other

Sealing flange



Applications:

- sealing of lead-ins, ventilation ducts via Ruukki panel envelope

Notes:

- flexible, conical flange made of silicone can be cut to the required diameter
- the flange fits exactly to an external facing of Ruukki panel thanks to an aluminium frame fixed to a panel with screws
- assembly sets include flange, sealing compound and fasteners
- additionally a suitable clip made of stainless steel (consisting of lock and band) should be ordered to ensure tight joint between flange and conduit/duct
- for diameters larger than 160 mm reduced purlin spans should be used (in order to match it to the increased load on the panel row)

Symbol	Tube OD	Flange base size	Tube capacity with sealing compound ¹	Number of screws ¹
	[mm]	[mm]	[ml]	[pieces]
DFE1	0 - 35	99 x 99	80	8
DFE2	5 - 55	137 x 137	80	8
DFE3	5 - 76	178 x 178	80	12
DFE4	5 - 127	221 x 221	80	16
DFE5	75 - 175	280 x 280	80	20
DFE6	125 - 230	363 x 363	80	28
DFE7	150 - 300	456 x 456	310	32
DFE8	230 - 508	681 x 681	310	48

¹ in set with the sealing flange

Expanding sealing tape



Applications:

- impregnated tape with PU foam (ready for immediate use with a self-adhesive backing) for use in joints and gaps between plinth and plinth track EA1U / EA1W
- Ruukki Energy wall panels according to a table below

Expanding sealing tape	135 / 7-12	185 / 7-12	250 / 7-12
Panel type			
SP2B 100 PIR ENERGY	✓		
SP2D 100 PIR ENERGY	✓		
SP2D 120 PIR ENERGY	✓		
SP2E 120 PIR ENERGY	✓		
SP2E 160 PIR ENERGY		✓	
SP2E 180 PIR ENERGY		✓	
SP2E 200 PIR ENERGY			✓
SPB 160 MW ENERGY		✓	
SPB 180 MW ENERGY		✓	
SPB 200 MW ENERGY			✓
SP2D 160 MW ENERGY		✓	
SP2D 180 MW ENERGY		✓	

Butyl Ali-Tape



Applications:

- sealing tape which consists of a quality plasto-elastic butyl rubber (from one side covered with film layer, from the other side covered with aluminium) for sealing, to connect and isolate joints, slots
- elimination of the capillary between plinth and expanding sealing tape – see examples in a table below

Ruukki Energy panels with PIR and mineral wool core	Butyl Ali-Tape				
	Panel thickness	40 x 0.7 mm	60 x 0.7 mm	100 x 0.7 mm	150 x 0.7 mm
40	✓				
60			✓		
80				✓	
100				✓	
120			2x		
140	✓			✓	
150			✓	✓	
160			✓	✓	
170			✓	✓	
180	✓				✓
200				2x	
230				✓	✓

Bitumen Ali-Tape



Applications:

- aluminium film with self-adhesive bitumen-elastan layer for sealing, to connect and isolate joints, slots
- elimination of the capillary between plinth and expanding sealing tape – see examples in a table below

Ruukki Energy panels with PIR and mineral wool core	Bitumen Ali-Tape		
	Panel thickness	100 x 1.3 mm	150 x 1.3 mm
100	✓		
120		✓	
140		✓	
150		✓	
160		✓	
170			✓
180			✓
200			✓
230	✓	✓	

PU flexible foam



Applications:

- hermetic joints for passive buildings

PUR foam cleaner



Applications:

- to remove uncured PU foam and to clear gun after use
- to remove fresh residue of paint, wax, grease, oil and glue

Notes

Multiple horizontal yellow lines for taking notes.

Engineering and construction company Rauta is the leading supplier of reliable building solutions in Ukraine and European Union.

Rauta provides complete solutions including: building design, supply of frames, sandwich panels, facades, prefabricated buildings, fireproofing, as well as installation and related services.

The company uses only certified European produced materials. Rauta is the exclusive supplier to Ukraine of Ruukki commercial products and the developer of innovations that reduce the cost and term of construction.

Everything we construct is building our reputation!

RAUTA
RELIABLE SOLUTIONS

Starokyivska str. 10G,
Kyiv, Ukraine, 04116, BC Vector
+38 044 364-85-73
info@rautagroup.com
www.rautagroup.com

This publication is accurate to the best of our knowledge and understanding. Although every effort has been made to ensure accuracy, the company does not assume any responsibility for any errors or omissions, or any direct, indirect or consequential damage caused by incorrect application of the information. We reserve the right to make changes. Always use original standards for accurate comparison. For latest technical updates, please visit www.rautagroup.com