

# PREFABRICATED BUILDINGS

**RAUTA**

Facades ■ Roofs ■ Buildings



# Rauta

- ✓ Expert in steel construction
- ✓ Exclusive supplier of Ruukki commercial products to Ukraine
- ✓ Design, supply, installation



## LGSF system

LGSF (Light Gauge Steel Frame) is a technology of energy-efficient prefabricated frame construction.

LGSF houses are reliable, safe, environmentally friendly and provide a comfortable microclimate.



## Technology advantages

- ✓ Complete set of delivery
- ✓ High speed of construction
- ✓ Optimal price
- ✓ High precision of structures
- ✓ Modularity and expandability
- ✓ Light weight
- ✓ Seismic stability up to magnitude 7





# Installation advantages

- ✓ Quick and easy installation without crane
- ✓ All-weather installation
- ✓ Tight working space installation
- ✓ Low qualification requirements for installers
- ✓ Installation instructions available



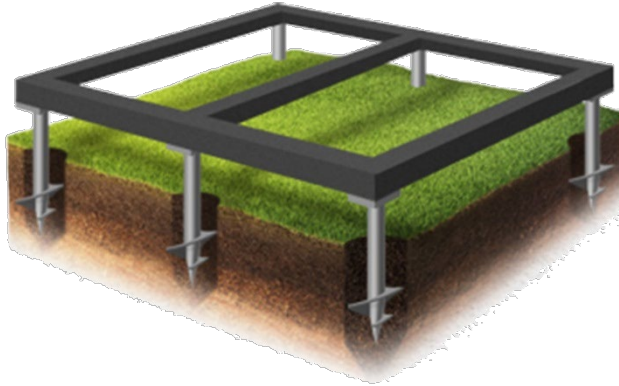
## Operation advantages

- ✓ High energy efficiency
- ✓ Comfortable microclimate
- ✓ Durability over 100 years
- ✓ High insect and bacteria resistance
- ✓ Easy repairment



# Foundation

Due to the low weight of the building structures (30-45 kg/m<sup>2</sup>), there is no need to build an expensive massive foundation, but it is enough to apply a light strip, columnar or screw foundation.



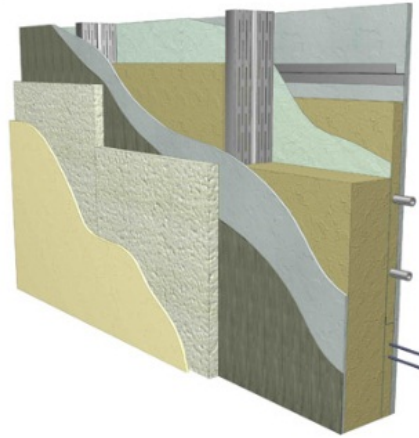
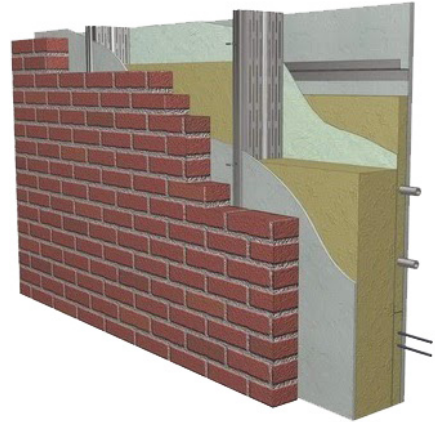
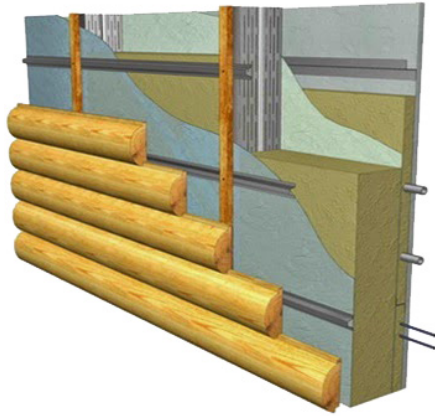
# Frame

It is assembled from cold-formed profiles made of high-quality galvanized steel (Zn 275 g/m<sup>2</sup>).

The durability of galvanized structures ensures long-term building in any climate conditions.





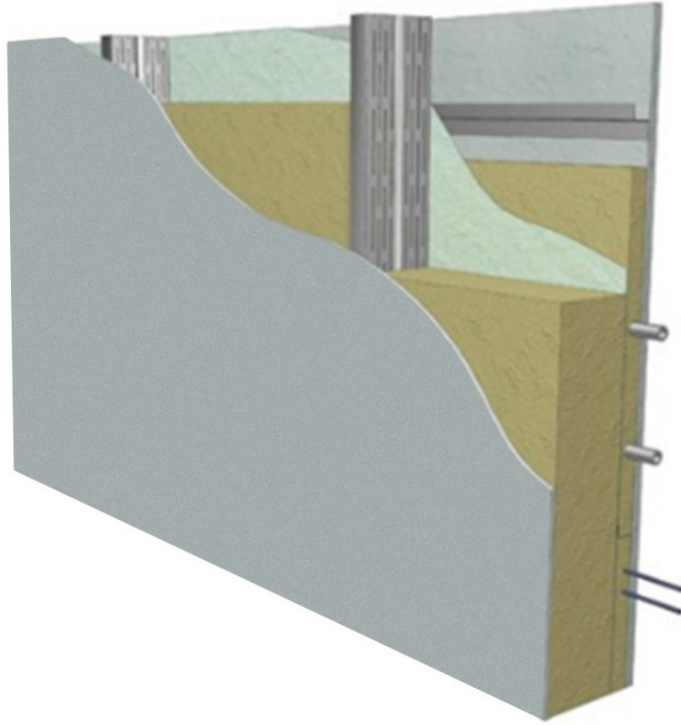


## Exterior walls

They consist of sandwich panels or thermal panels.

On the inside, the panels are decorated with gypsum board, on the outside - with any finishing material upon the customer's request.

For facade decoration all materials can be used, including facing bricks, ventilated facades, siding, plaster, etc.

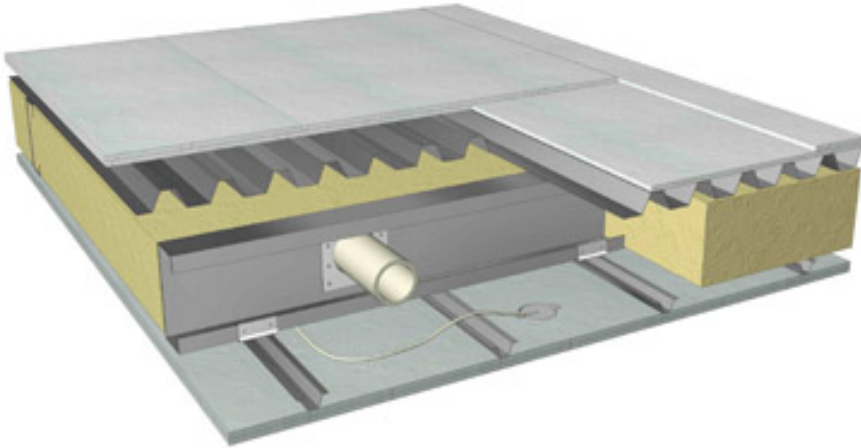


## Interior walls

They consist of sandwich panels or LGSF thermal panels with a sound insulation.

The walls are decorated on both sides with gypsum board and are ready for finishing.

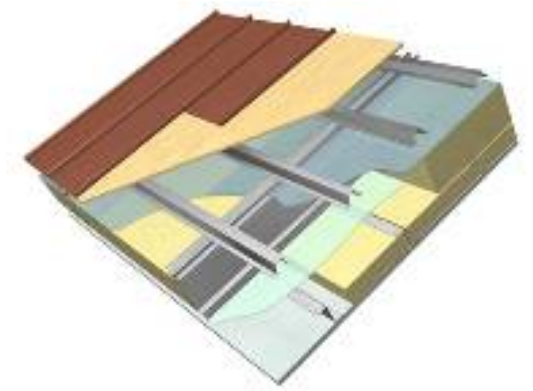
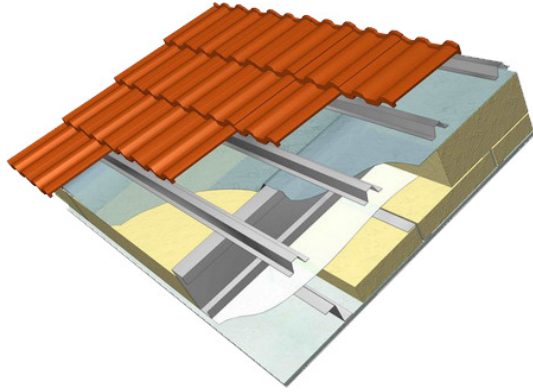
# Floor deck



They are made as beams or trusses, on top of which steel trapezoid sheets of OSB boards are laid.

The floor structure is filled with mineral wool, providing heat and sound insulation.

The bottom of the floor deck is decorated with gypsum board and the top is flooded with a reinforced screed for flooring.



# Roof

Roofing structures can have any configuration, as well as imply the attic floor arrangement.

As a roofing coating, any modern materials can be used – tile sheets, seam profiles, etc.



# References





































# THANK YOU FOR ATTENTION!

**RAUTA**

Facades ■ Roofs ■ Buildings

+38 044 364 85 73

[www.rautagroup.com](http://www.rautagroup.com)