

BUILDINGS

RAUTA
Facades ■ Roofs ■ Buildings



Rauta

- ✓ Expert in steel construction
- ✓ Exclusive supplier of Ruukki commercial products to Ukraine
- ✓ Design, supply, installation



Rauta buildings advantages

- ✓ Complete set of delivery
- ✓ Ready-made optimized design
- ✓ Durability of galvanized structures more than 100 years
- ✓ Light weight
- ✓ Quick and easy installation
- ✓ Ability to hang up equipment
- ✓ Possibility of delivery of up to 100 th m² of buildings per month



Rauta proposal

- ✓ Typical structures
- ✓ Design
- ✓ Production
- ✓ Complete delivery
- ✓ Installation
- ✓ Guarantee

Standard sizes of typical buildings¹

Height ² , m	Span width, m					
	6 post spacing 6,0 m	9 post spacing 4,5 m	12 post spacing 4,5 m	15 post spacing 4,5 m	18 post spacing 4,0 m	21 post spacing 3,0 m
3,0	✓	✓	✓	✓	✓	✓
3,6	✓	✓	✓	✓	✓	✓
4,2	✓	✓	✓	✓	✓	✓
4,8	✓	✓	✓	✓	✓	✓
5,4	—	✓	✓	✓	✓	✓
6,0	—	✓	✓	✓	✓	✓

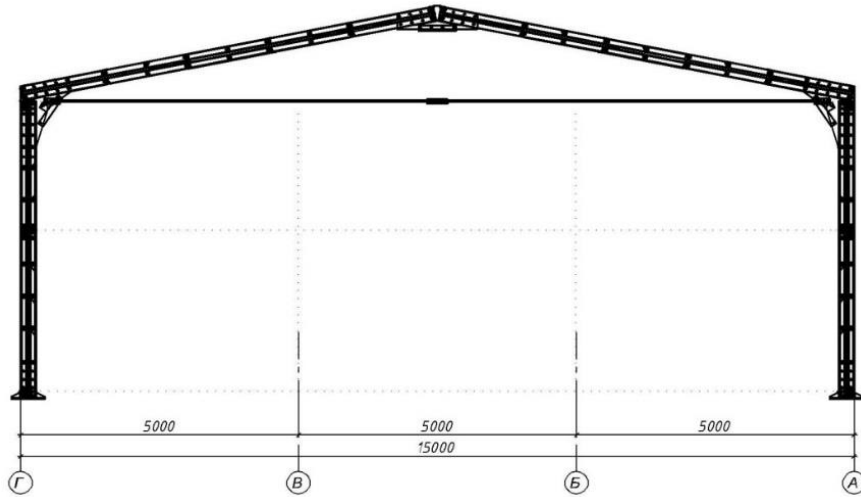
¹ It is possible to supply buildings of any size on an individual request

² The height of the building is the height from the floor to the bottom of the load-bearing structures

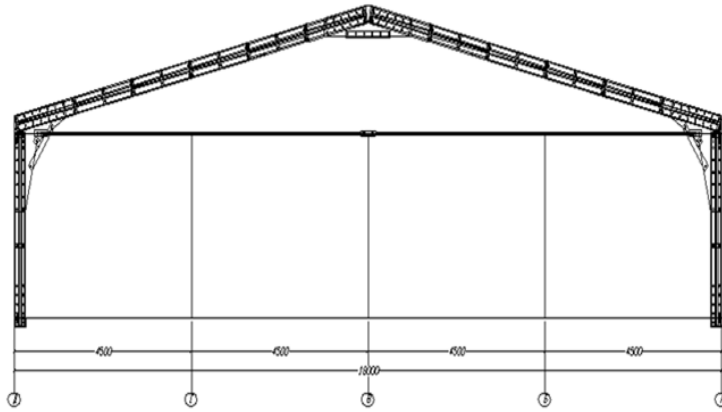
Frame structure



Design features

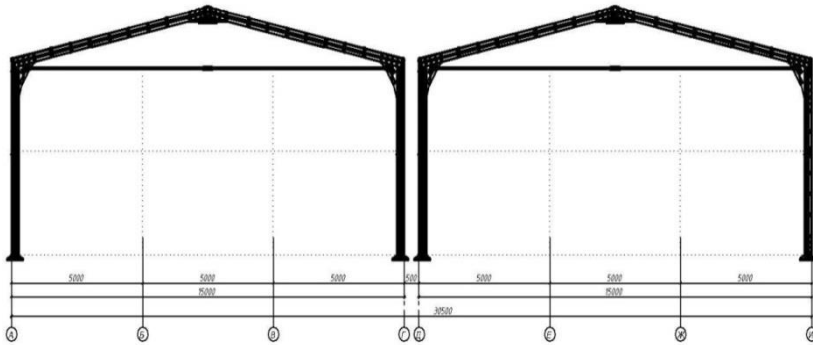


- ✓ A row of single-span frames with a tightening
- ✓ Σ - and C-shaped purlins
- ✓ All fixing of the frame are bolted
- ✓ Anchorage blocks for foundations are included in the scope of supply



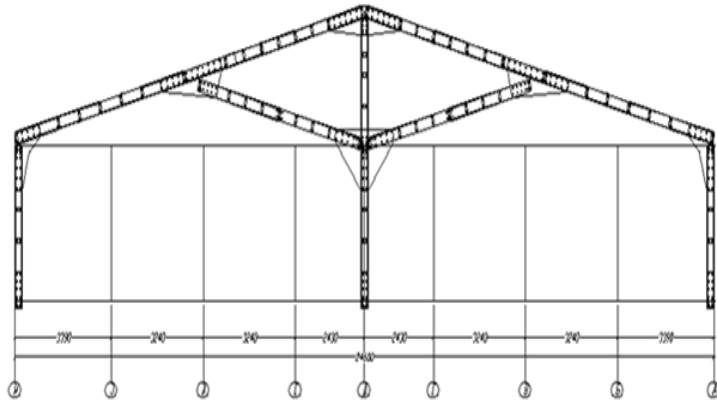
Single-span buildings

- ✓ Width – from 6 to 21 m



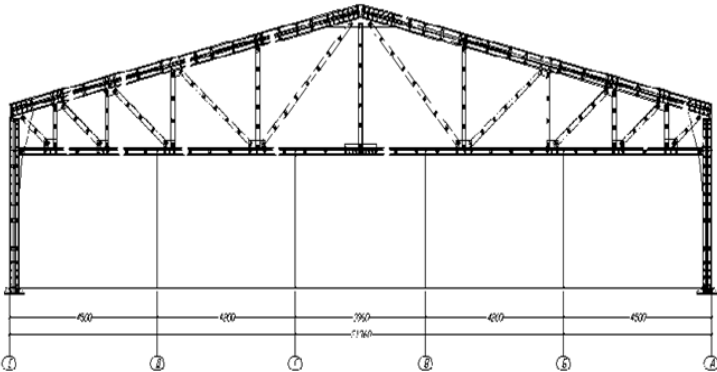
Multi-span buildings

- ✓ Width – optional
- ✓ Include an organized drainage system



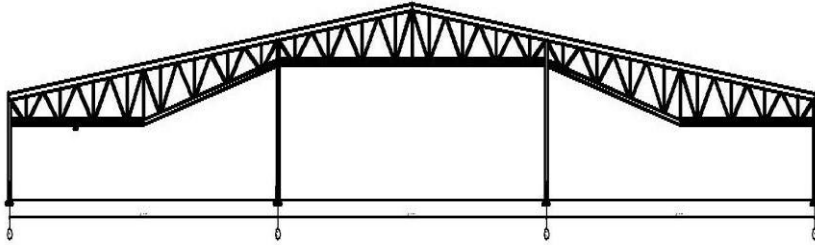
Double-span buildings under a single roof

- ✓ Width is 24.6 m (12.3 m + 12.3 m)

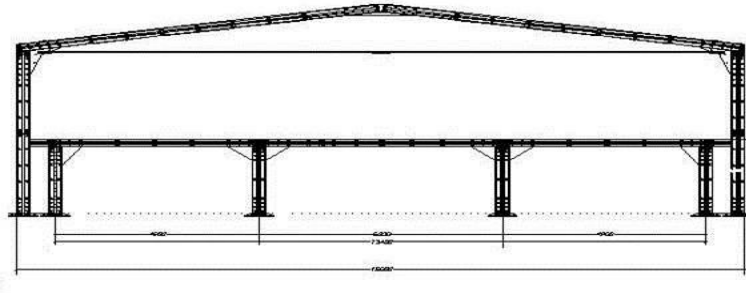


Truss buildings

- ✓ Width - 18, 21, 24 m
- ✓ Possibility to install a false ceiling and walls from the inside
- ✓ Increased post spacing and foundation number reduction



Three-span buildings under a single roof

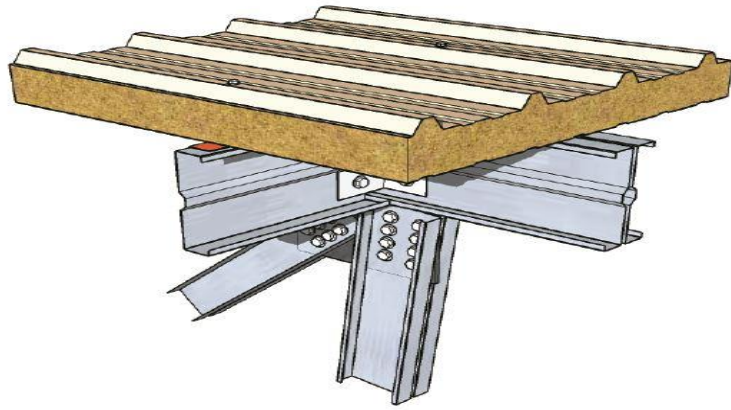


Two-story buildings

- ✓ Floor deck frame is installed on separate columns

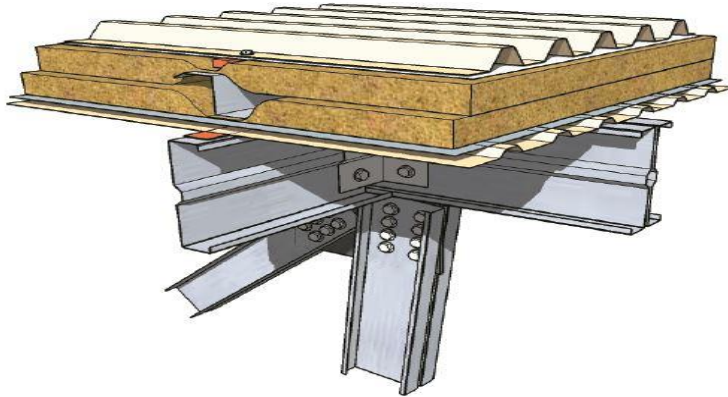
Cladding structures



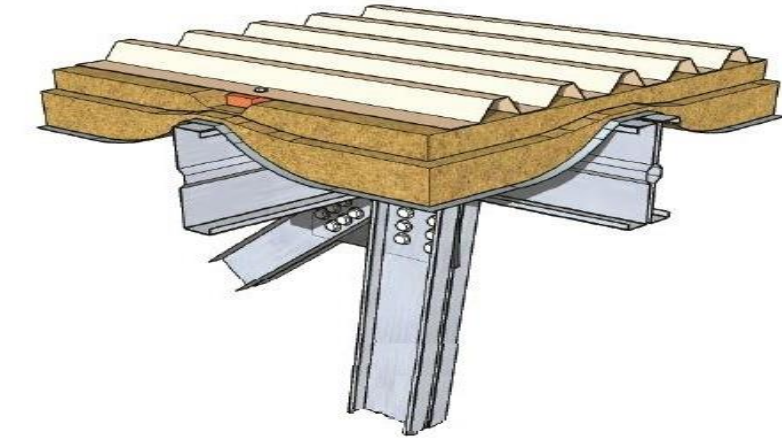


Roof

- ✓ Roofing sandwich panel (mineral wool or PIR)

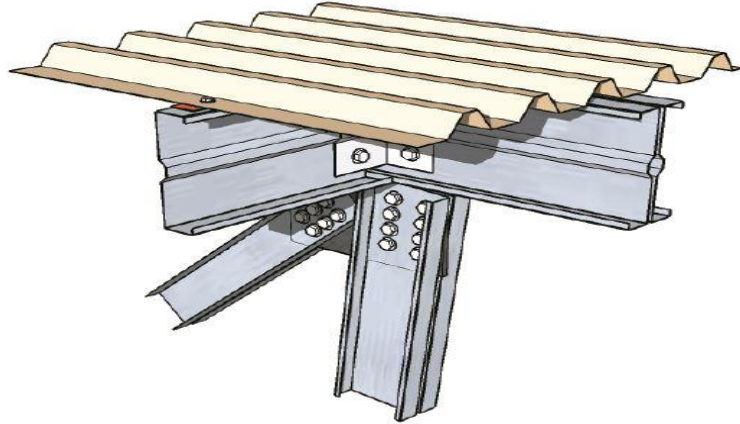


- ✓ Site assembled panel (mineral wool)

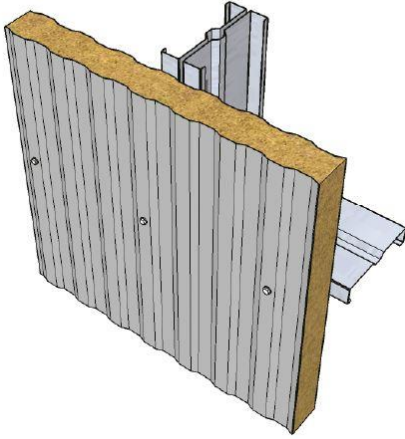


Roof

- ✓ Roofing trapezoidal profile and mineral wool on foil

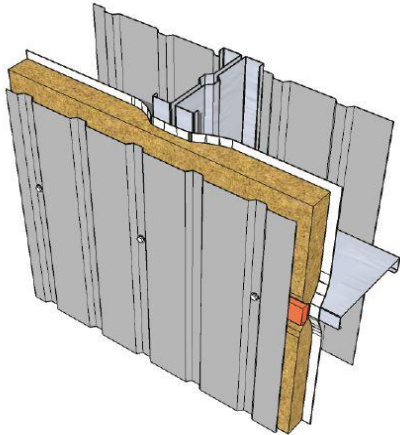


- ✓ Roofing trapezoidal profile

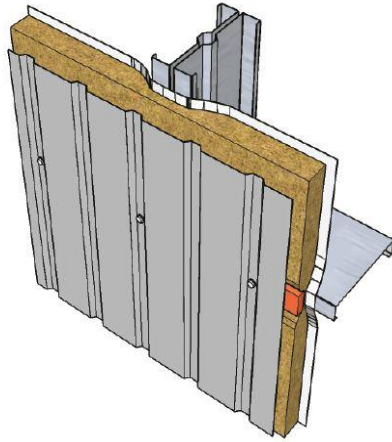


Wall

- ✓ Wall sandwich panel (mineral wool or PIR)

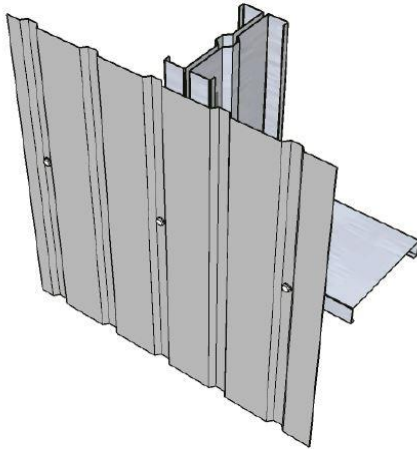


- ✓ Site assembled panel (mineral wool)



Wall

- ✓ Trapezoidal profile and mineral wool on foil



- ✓ Trapezoidal profile



Accessories

- ✓ Translucent polycarbonate sheets for roof and walls
- ✓ Rainwater system



Complete set



Complete set

- ✓ Purlins
- ✓ Flashings
- ✓ Fixing
- ✓ Sealants
- ✓ Accessories

Services





Design

- ✓ Design according to DSTU and Eurocode
- ✓ Design of sections MS, CS, AR, AC
- ✓ Library of technical solutions:
 - Firewalls
 - Light removable structure
 - Passive buildings



Installation

- ✓ Assembly instructions
- ✓ Installation supervision
- ✓ Installation



Service

- ✓ Delivery
- ✓ Complete set calculation
- ✓ Selection of polymer coatings
- ✓ Energy audit
- ✓ Additional panels of identical shade

References



Scania



RAUTA
Facades ■ Roofs ■ Buildings

www.rautagroup.com



Toyota showroom

Lexus showroom



Nissan showroom



Sports center



Sports center



Poultry farm



Poultry farm



Pig farm



Dairy farm



Commercial and industrial complex



Warehouse



THANK YOU FOR ATTENTION!

RAUTA

Facades ■ Roofs ■ Buildings

+38 044 364 85 73

www.rautagroup.com